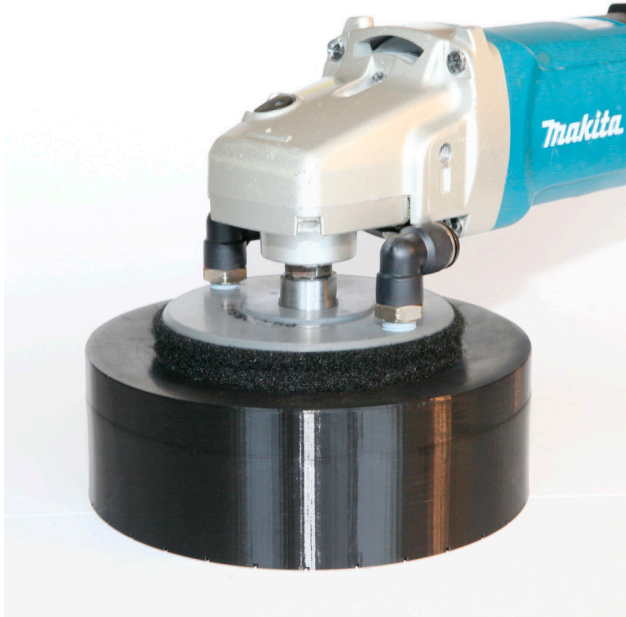


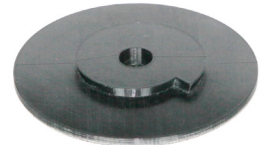
KPS Cobra 5
Power tools



Basic Kit



980203



980204
980205



980202



980201

Accessories

KPS COBRA 5

Introducing the totally new re-designed KPS Cobra 5. The Cobra kit is designed to attach to just about any hand held polisher for use when refinishing natural stone, concrete, quartz counter tops, stairs, walls and edges. It will turn your ordinary polisher into a powerful, versatile refinishing tool.

Attach any of your favorite drive pads, cup wheels, diamond brush or the custom designed "Snail Lock" drive pad holder, then slide on the unique Cobra Splash guard to wet grind, hone, polish and antique brush with no over spray. This will save you a ton of setup and clean up time. To grind dry, simply attach the dry vac kit. The Splash guard/Dust guard comes in 2 sizes, 5 & 7".

One of the best features of the newly designed Cobra 5 is the ability to add weight. The basic kit comes with a 4 lb. weight that locks in place. The combined weight is 5 lbs of extra cutting pressure. This makes honing and polishing a lot easier virtually eliminating user fatigue.

BENEFITS:

- Cut wet with Virtually no splashing or cut dry with no dust.
- Spend less prep time which saves money on material & labour.
- Provides consistent, even pressure resulting in a better finish.
- Add the weight kit to grind and polish hard surfaces with ease.
- Attach water-feed kit through the elbow or use centre water-feed feature.
- Hone and polish walls with full water-feed feature and no overspray.
- Splashguard protects walls and baseboards from drive pad damage.
- Greatly reduces user fatigue.
- Prolongs the life of the hand machine.

Stock No.	Description
980200	KPS Cobra 5 Kit

ACCESSORIES

Stock No.	Description
980201	Vacuum Adapter Kit
980202	Water feed
980203	Splash Guard 7"
980204	5" S&L Pad Holder to Velcro
980205	7" S&L Pad Holder to Velcro