

# Omni Cubed™ Slim Slab Table HD Material Handling



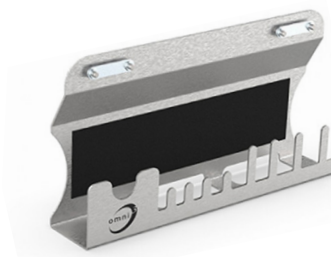
## Omni Cubed™ Slim Slab Table HD

Omni Cubed's Slim Slab Table HD is the sturdiest large format thin material table on the market today. The Slim Slab Table HD helps reduce the strain of bending, kneeling, or overstretching, as well as preventing bowing of the materials causing cracks or breakage. Material Support Pucks and Stop Posts keep the material off the rails and securely on the table during scoring, cutting, beveling, and more. Use the connecting piece to combine two tables into one to easily accommodate 1.5 x 3.6 m slabs.

- Ultra-rigid table that provides a flat, non-slip surface for safe jobsite fabrication
  - Ideal for LFTM (large format thin material), gauged or thin porcelain slabs, and sintered stone such as Dekton® and Neolith®
  - Pitched and bolted legs provide more stability than collapsible legs, yet quickly detach for transport
  - Easy-adjust leveling feet make setting up on uneven floors a breeze
  - Comfortable work height makes all-day fabrication easier and reduces worker strain
  - Non-marking synthetic rubber support pucks firmly hold material, while also reducing dangerous vibrations from power tools
  - Material is held safely above the surface of the aluminum rails allowing for through cuts, plunge cuts, and coring without damaging the tools or table
  - Bump stop posts keep smaller pieces from sliding while doing edge work
  - Tables can be connected with provided brackets to accommodate longer material and full slabs
  - Tool Shelf (sold separately) provides convenient access to grinders, core bits, and polishing pads while fabricating
  - Each table top is 71" x 59" (1.8 m x 1.5 m) and can accommodate slabs up to 600 lb (272 kg) evenly distributed
- Includes:** one table, two table connectors, four material stop posts, 48 material support pucks, 3/16" t-handle hex key.

## Omni Cubed™ Slim Slab Table Tool Shelf

The Slim Slab Table Tool Shelf easily attaches to the rails of the Slim Slab Table HD for convenient access to your tools during on-site fabrication. Unique cut outs store your grinder and core bits, while the velcro backing secures your polishing pads.



Stock No.	Description
350398	Slim Slab Table HD
350399	Tool Shelf