

Catalogue 2013

THE
PERMANENT
VALUE

ADI

INDUSTRIAL DIAMOND APPLICATION

ADVANCED **SOLUTIONS**
FOR TECHNICAL MATERIALS

INDEX

Diamond Blades for Gres Materials	Page	3
Diamond Blades for SinterGlass Materials	Page	4
Drills for Gres Ceramic Materials and SinterGlass	Page	5
Vacuum brazed Core Drills for Gres Ceramic Materials Dry Cutting	Page	6
Incremental Finger Bit for Gres Ceramic Materials and SinterGlass	Page	7
Segmented Finger Bit for Gres Ceramic Materials and SinterGlass & Profile "Z"	Page	8
Profile "AR" for Gres Ceramic Materials	Page	9
Combined Wheels for Bevel Execution on Gres Ceramic Materials	Page	10
Stubbing Wheels for Gres Ceramic Materials and SinterGlass	Page	11
Polishing Pads For Glass and Gres Materials HYBRID KERAMIK	Page	12

Gres Materials include products from manufacturers such as:

LAMINAM® *

KERLITE *

TECHLAM® *

SinterGlass Materials include products from manufacturers such as:

MARMOGLASS *

STONEGLASS® *

WHITEGLASS *

CHINAGLASS *

All original manufacturer names are used for identification purpose only

*Trademark property of : LAMINAM, KERLITE, TECHLAM, STONEGLASS, CHINAGLASS, MARMOGLASS, WHITEGLASS, etc
ADI Spa is not affiliated with LAMINAM, KERLITE, TECHLAM, STONEGLASS, CHINAGLASS, MARMOGLASS, WHITEGLASS, etc

BACK TO INDEX



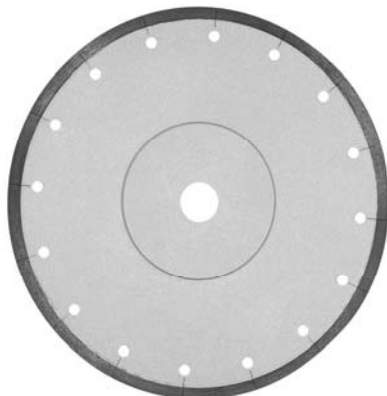
Continuous Rim Diamond Blades for Gres Materials (Wet Cutting)

<i>ADI Code</i>	<i>Description</i>	<i>RPM</i>	<i>FEED</i> [mm/min]
MT60003	Φ250 Bore Φ30	2.400-2.600	600-1.000
MT60001	Φ280 Bore Φ30	2.000-2.200	600-1.000
MT60015	Φ300 Bore Φ60	1.600-1.800	800-1.200
MT60012	Φ350 Bore Φ60	1.300 - 1.600	1.000 - 1.200
MT60005	Φ400 Bore Φ60	1.200 - 1.500	1.000 - 1.200
MT60006	Φ450 Bore Φ60	1.100-1.300	800-1.200



Segmented Diamond Blades for Gres Materials (Wet Cutting)

<i>ADI Code</i>	<i>Description</i>	<i>RPM</i>	<i>FEED</i> [mm/min]
MT61005	Φ450 Bore Φ60	1.100-1.300	800-1.200
MT61001	Φ500 Bore Φ60	1.000-1.200	8.00-1.200



Diamond Blades for Gres Materials (Dry Cutting)

<i>ADI Code</i>	<i>Description</i>	<i>RPM</i>	<i>FEED</i> [mm/min]
MT67001	Φ115 Bore Φ22.2	2.200-2.800	Manual
MT67002	Φ125 Bore Φ22.2	2.200-2.800	Manual
MT67003	Φ230 Bore Φ22.2	2.200-2.800	Manual

[BACK TO INDEX](#)



Continuous Rim Diamond Blades for SinterGlass Materials (Wet Cutting)

<i>ADI Code</i>	<i>Description</i>	<i>RPM</i>	<i>FEED</i> [mm/min]
MT62001	Φ300 Bore Φ60	1.600-1.800	600-1.000
MT62002	Φ350 Bore Φ60	1.300-1.600	600-1.000
MT62003	Φ400 Bore Φ60	1.200-1.500	600-1.000
MT62004	Φ450 Bore Φ60	1.100-1.300	600-1.000



Segmented Diamond Blades for SinterGlass Materials (Wet Cutting)

<i>ADI Code</i>	<i>Description</i>	<i>RPM</i>	<i>FEED</i> [mm/min]
MT64005	Φ350 Bore Φ60	1.300-1.600	800-1.200
MT64003	Φ400 Bore Φ60	1.200-1.500	800-1.200
MT64008	Φ450 Bore Φ60	1.100-1.300	800-1.200
MT64009	Φ500 Bore Φ60	1.000-1.200	800-1.200

BACK TO INDEX



Continuous Rim Core Drills for Gres Ceramic Materials

<i>ADI Code</i>	<i>Description</i>	<i>RPM</i>	<i>FEED</i> [mm/min]
MT81022	Φ22 LU=16 A=1/2" GAS	2.400 - 2.700	40 - 50
MT81030	Φ30 LU=26 A=1/2" GAS	2.400 - 2.600	40 - 50
MT81035	Φ35 LU=26 A=1/2" GAS	2.400 - 2.500	40 - 50

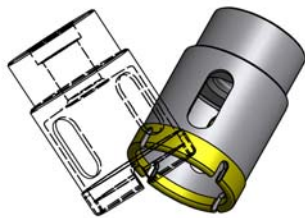


Continuous Rim + Slot Core Drills for Gres Ceramic Materials and SinterGlass

<i>ADI Code</i>	<i>Description</i>	<i>RPM</i>	<i>FEED</i> [mm/min]
MT80122	Φ22 LU=70 A=1/2" GAS	2.400 - 2.700	40 - 50
MT80130	Φ30 LU=70 A=1/2" GAS	2.400 - 2.600	40 - 50
MT80135	Φ35 LU=70 A=1/2" GAS	2.400 - 2.500	40 - 50
MT80168	Φ68 LU=70 A=1/2" GAS	1.800-2.000	40 - 50

BACK TO INDEX

Vacuum brazed Core Drills for Gres Ceramic Materials Dry Cutting



Correct Use in Starting Utilization

ADI CODE	DIAMETER	CONNECTION	RECOMMENDED RPM
MT85001	10	M14 Female	Max 11.000
MT85002	12		
MT85003	15		
MT85004	20		
MT85005	25		
MT85006	30		
MT85007	35		
MT85008	40		
MT85009	50		
MT85010	60		
MT85011	70		
MT85012	80		
MT85013	90		
MT85014	100		
MT85015	120		

BACK TO INDEX



Incremental Finger Bit for Gres Ceramic Materials (With Slots)

ADI Code	Description	RPM	FEED [mm/min]
MT75002	Φ12x15 LU=15 A=1/2" GAS	6.500 - 7.500	140 - 200
MT75004	Φ20x12 LU=12 A=1/2" GAS	5.500 - 6.000	200 - 300

Incremental Finger Bit for Gres Ceramic Materials and SinterGlass



ADI Code	Description	RPM	FEED [mm/min]
MT75005	Φ 6x10 LU=15 A=1/2" GAS	6.500-7.000	140 - 200
MT75006	Φ 8x10 LU=15 A=1/2" GAS	6.500-7.000	140 - 200
MT75007	Φ10x10 LU=15 A=1/2" GAS	6.500-7.000	140 - 200
MT75008	Φ12x10 LU=15 A=1/2" GAS	6.500-7.000	140 - 200

Incremental Finger Bit for Gres Ceramic Materials and SinterGlass



ADI Code	Description	RPM	FEED [mm/min]
MT75009	Φ20/14x12 A=M12	5.500 - 6.000	200 - 300
SL02219	ADAPTOR M12 LU55 A=1/2" GAS	-	-

BACK TO INDEX



Segmented Finger Bit for Gres Ceramic Materials and SinterGlass

ADI Code	Description	RPM	FEED [mm/min]
MT74002	$\Phi 10 \times 27$ A=1/2" GAS	6.000-7.000	200 - 300
MT74005	$\Phi 20 \times 12$ A=1/2" GAS	4.000-4.500	200 - 300
MT74003	$\Phi 16 \times 40$ A=1/2" GAS	5.000-6.000	200 - 300
MT74004	$\Phi 20 \times 42$ A=1/2" GAS	4.000-4.500	200 - 300

Profile "Z" Finger Bit for Gres Ceramic Materials



ADI Code	Description	RPM	FEED [mm/min]
MT90001	$\Phi 20 \times 12$ Pos.1 A=1/2" GAS	6.500 - 7.000	600-800
MT90002	$\Phi 20 \times 12$ Pos.2 A=1/2" GAS	6.500 - 7.000	600-800
MT90003	$\Phi 20 \times 12$ Pos.3 A=1/2" GAS	6.500 - 7.000	600-800

BACK TO INDEX



Combined Finger Bit + Profile "AR" Finger Bit for Gres Ceramic Materials

ADI CODE	ϕ	C	U	RPM	FEED [mm/min]
MT76002	15	5	3.5	10.000 - 12.000	400 - 500
MT76003		8	5	10.000 - 12.000	400 - 500
MT76001		10	7	10.000 - 12.000	400 - 500
MT76004		12	9	10.000 - 12.000	400 - 500
MT76005		15	12	10.000 - 12.000	400 - 500



Profile "AR" Finger Bit for Gres Ceramic Materials

ADI CODE	ϕ	C	U	RPM	FEED [mm/min]
MT77002	15	3	2	10.000 - 12.000	400 - 500
MT77003		5	3.5	10.000 - 12.000	400 - 500
MT77004		8	5	10.000 - 12.000	400 - 500
MT77001		10	7	10.000 - 12.000	400 - 500
MT77005		12	9	10.000 - 12.000	400 - 500
MT77006		15	12	10.000 - 12.000	400 - 500
MT77007		19	16	10.000 - 12.000	400 - 500

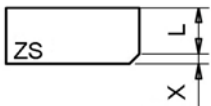


BACK TO INDEX

Combined Wheels for Bevel Execution on Gres Ceramic Materials



Full Set Pos.1-2-3

ADI Code	Φ	
MT91001	152 Bore 35	



Pos.1

ADI Code	Description	RPM	FEED [mm/min]
MT91002	D.152 Bore 35 Segmented	4.500	600-1.000



Pos.2

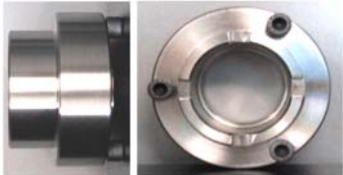
ADI Code	Description	RPM	FEED [mm/min]
MT91003	D.120 Bore 35 Continuous Rim+Slots	4.800	600-1.000



Pos.3

ADI Code	Description	RPM	FEED [mm/min]
MT91004	D. 88 Bore 35 Continuous Rim+Slots	5.500	400-800

BACK TO INDEX



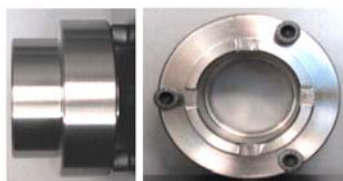
Segmented Stubbing Wheels for Gres Ceramic Materials and SinterGlass

ADI Code	Description	RPM	FEED [mm/min]
MT73003	Φ 87x20x5 F=50	4.500 - 6.000	400 - 800
SL01050	Φ 72 F=35	-	-
PB29015	Φ 72 F=50	-	-



Super Duty Stubbing Wheels for Gres Ceramic Materials and SinterGlass

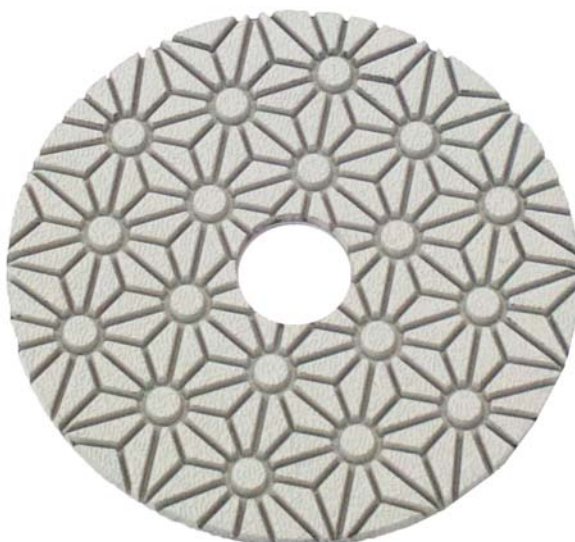
ADI Code	Description	RPM	FEED [mm/min]
MT73001	Φ 54x25x7 F=14	5.000 - 7.000	500 - 900
SL02358	Φ 34 F=14	-	-



ADI Code	Description	RPM	FEED [mm/min]
MT73002	Φ 91x30x7 F=50	4.500 - 6.000	400 - 800
SL01050	Φ 72 F=35	-	-
PB29015	Φ 72 F=50	-	-

BACK TO INDEX

Polishing Pads For Glass and Gres Materials
HYBRID KERAMIK



ADI CODE	DESCRIPTION	COLOR	POS
MTJ0001	PAD D.100 HYBRID KERAMIK	VIOLET	0
MTJ0002	PAD D.100 HYBRID KERAMIK	VIOLET	0+
MTJ0003	PAD D.100 HYBRID KERAMIK	RED	1
MTJ0004	PAD D.100 HYBRID KERAMIK	YELLOW	2
MTJ0005	PAD D.100 HYBRID KERAMIK	BLUE	3
MTJ0006	PAD D.100 HYBRID KERAMIK	GREEN	4
MTJ0007	PAD D.100 HYBRID KERAMIK	ORANGE	5
MTJ0008	PAD D.100 HYBRID KERAMIK	WHITE	6

ADI CODE	DESCRIPTION	COLOR	POS
MTJ0010	FULL SET PAD D.100 HYBRID KERAMIK	-	ALL



ADI S.p.A.
Via dell'Economia, 12/16 - 36016 Thiene (VI) Italy
Tel: +39.0445.360244 Fax: +39.0445.366862
info@aditools.com - www.aditools.com

ADI USA Inc.
1477 Connelly Springs Rd 28645 Lenoir / North Carolina - USA
Tel. 1-828-7284711 - Fax 1-828-7289613
info@aditools-usa.com - www.aditools-usa.com