

NORTH AMERICA

Catalogue 2013

THE
PERMANENT
VALUE

ADI

INDUSTRIAL DIAMOND APPLICATION

ADVANCED **FAB LAB**
COMPETENCE SERVICE

Modular Vacuum Pods
for **STONE / with Lip**

INDEX

Vacuum Pods H= 90 Breton	Page	3
Vacuum Pods H= 100 Brembana	Page	6
Vacuum Pods H= 105 Intermac - Northwood - Park industries	Page	9
Vacuum Pods H= 120 Denver	Page	12
Vacuum Pods H= 120 Denver Mechanical Fixing	Page	15
Vacuum Pods H= 124.5 Bavelloni	Page	18
Vacuum Pods H= 140 Bimatech	Page	21
Vacuum Pods H= 150 Thibaut	Page	24
Vacuum Pods H= 150 Breton	Page	27
Vacuum Pods H= 160 Omag	Page	30
Vacuum Pods H= 200 Brembana	Page	33
Vacuum Pods H= 213 Intermac Plus	Page	36
Vacuum Pods H= 240 Prussiani	Page	39
Accessories	Page	42

BACK TO INDEX

Vacuum Pods H= 90 Square Shape

Breton



Slotted

Code	Product details
KS01002	Top 150x150 H= 90x4 Base 150x150
KS01512	Top 200x200 H=90x4 Base200x200

No Slotted

Code	Product details
KS01601	Top 150x150 H= 90x4 Base 150x150
KS01602	Top 200x200 H=90x4 Base200x200

All elements are sold without air fittings
Size of air fitting must be specified



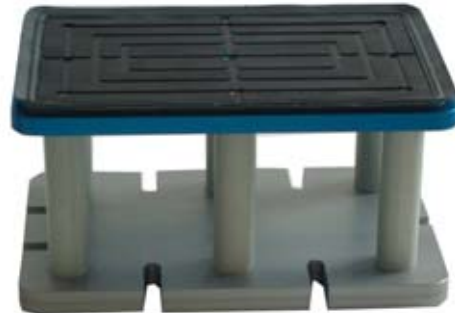
“45°” Shaped
Air Fitting
Male

Code	Product details	
KR09001	D 6 mm - 1/4 ”	
KR09002	D 8 mm - 1/4 ”	
KR09003	D 10 mm - 1/4 ”	
KR09004	D 12 mm - 1/4 ”	

BACK TO INDEX

Vacuum Pods H= 90 Rectangular Shape

Breton



Slotted

Code	Product details
KG02101	Top 200x 40 H= 90x2 Base 200x100
KS02002	Top 300x200 H= 90x6 Base 300x200
KS02107	Top 400x200 H= 90x6 Base 400x200
KS02108	Top 500x250 H= 90x8 Base 500x250
KS02102	Top 45x400 H= 90x3 Base 300x150

No Slotted

Code	Product details
KG02601	Top 200x 40 H= 90x2 Base 200x100
KS02602	Top 300x200 H= 90x4 Base 300x200
KS02603	Top 45x400 H= 90x3 Base 300x150

All elements are sold without air fittings
Size of air fitting must be specified



“45°” Shaped
Air Fitting
Male

Code	Product details
KR09001	D 6 mm - 1/4 ”
KR09002	D 8 mm - 1/4 ”
KR09003	D 10 mm - 1/4 ”
KR09004	D 12 mm - 1/4 ”

BACK TO INDEX

Vacuum Pods H= 90

Rounded Shape

Breton



Slotted

Code	Product details
KS03530	Top Ø 100 H= 90 Base Ø 130
KS03532	Top Ø 130 H= 90 Base Ø 130
KS03534	Top Ø 160 H= 90 Base Ø 200
KS03009	Top Ø 200 H= 90 Base Ø 200

No Slotted

Code	Product details
KS03601	Top Ø 100 H= 90 Base Ø 130
KS03602	Top Ø 130 H= 90 Base Ø 130
KS03603	Top Ø 160 H= 90 Base Ø 200
KS03604	Top Ø 200 H= 90 Base Ø 200

All elements are sold without air fittings
Size of air fitting must be specified



Straight
Air Fitting
Male

Code	Product details
KR05001	D 6 mm - 1/4 "
KR05002	D 8 mm - 1/4 "
KR05003	D 10 mm - 1/4 "
KR05004	D 12 mm - 1/4 "

BACK TO INDEX

Vacuum Pods H=100 Square Shape

Brembana



Code	Product details
KS01013	Top 100x100 H=100x2 Base100x100
KS01014(*)	Top 150x150 H=100x4 Base 150x150
KS01015(*)	Top 200x200 H=100x4 Base200x200

Corner Shape



Code	Product details
KS05001(*)	Top Corner 150 H=100x3 Base150x150



Most Standard Sizes

All elements are sold without air fittings
Size of air fitting must be specified



“45°” Shaped
Air Fitting
Male



“L” Shaped
Air Fitting
Male



(*) Optional
Release Valve

Code	Product details
KR09001	D 6 mm - 1/4 ”
KR09002	D 8 mm - 1/4 ”
KR09003	D 10 mm - 1/4 ”
KR09004	D 12 mm - 1/4 ”

Code	Product details
KR06001	D 6 mm - 1/4 ”
KR06002	D 8 mm - 1/4 ”
KR06003	D 10 mm - 1/4 ”
KR06004	D 12 mm - 1/4 ”

Code	Product details
KS28001	1/4” Thread

BACK TO INDEX

Vacuum Pods H=100 Rectangular Shape

Brembana



Code	Product details
KS02033(*)	Top 150x70 H=100x2 Base 150x150
KS02034(*)	Top 200x55 H=100x2 Base 200x150
KS02035(*)	Top 200x70 H=100x2 Base 200x150
KS02036(*)	Top 200x100 H=100x2 Base 200x150
KS02037(*)	Top 200x150 H=100x4 Base 200x150
KS02038(*)	Top 300x150 H=100x6 Base 300x150
KS02039(*)	Top 300x200 H=100x6 Base 300x200
KS02040(*)	Top 400x200 H=100x6 Base 400x200
KS02144(*)	Top 500x250 H=100x8 Base 500x250
KS02150(*)	Top 45x400 H=100x3 Base 300x150
KS02171(*)	Top 45x300 H=100x3 Base 300x150



Most Standard Sizes

All elements are sold without air fittings
Size of air fitting must be specified



“45°” Shaped
Air Fitting
Male



“L” Shaped
Air Fitting
Male



(*) Optional
Release Valve

Code	Product details
KR09001	D 6 mm - 1/4 ”
KR09002	D 8 mm - 1/4 ”
KR09003	D 10 mm - 1/4 ”
KR09004	D 12 mm - 1/4 ”

Code	Product details
KR06001	D 6 mm - 1/4 ”
KR06002	D 8 mm - 1/4 ”
KR06003	D 10 mm - 1/4 ”
KR06004	D 12 mm - 1/4 ”

Code	Product details
KS28001	1/4” Thread

Vacuum Pods H=100 Rounded Shape

BACK TO INDEX

Brembana



Code	Product details
KS03037	Top Ø 80 H=100 Base Ø 80
KS03038	Top Ø 100 H=100 Base Ø 120
KS03039	Top Ø 120 H=100 Base Ø 120
KS03141	Top Ø 130 H=100 Base Ø 130
KS03041	Top Ø 150 H=100 Base Ø 150
KS03114	Top Ø 160 H=100 Base Ø 160
KS03165	Top Ø 180 H=100 Base Ø 180
KS03043	Top Ø 180 H=100 Base Ø 200
KS03044	Top Ø 200 H=100 Base Ø 200



Most Standard Sizes

All elements are sold without air fittings
Size of air fitting must be specified



**Straight
Air Fitting
Male**

Code	Product details
KR05001	D 6 mm - 1/4 "
KR05002	D 8 mm - 1/4 "
KR05003	D 10 mm - 1/4 "
KR05004	D 12 mm - 1/4 "

Vacuum Pods H=105 Square Shape

[BACK TO INDEX](#)

Intermac - Northwood
Park Industries



Code	Product details
KS01001	Top 100x100 H=105x2 Base100x100
KS01016(*)	Top 150x150 H=105x4 Base 150x150
KS01017(*)	Top 200x200 H=105x4 Base200x200

Corner Shape



Code	Product details
KS05002(*)	Top Corner 150 H=105x3 Base150x150

 Most Standard Sizes

All elements are sold without air fittings
Size of air fitting must be specified



“45°” Shaped
Air Fitting
Male



“L” Shaped
Air Fitting
Male



(*) Optional
Release Valve

Code	Product details
KR09001	D 6 mm - 1/4 ”
KR09002	D 8 mm - 1/4 ”
KR09003	D 10 mm - 1/4 ”
KR09004	D 12 mm - 1/4 ”

Code	Product details
KR06001	D 6 mm - 1/4 ”
KR06002	D 8 mm - 1/4 ”
KR06003	D 10 mm - 1/4 ”
KR06004	D 12 mm - 1/4 ”

Code	Product details
KS28001	1/4” Thread

Vacuum Pods H=105 Rectangular Shape

BACK TO INDEX

Intermac - Northwood
Park Industries



Code	Product details
KS02041(*)	Top 150x70 H=105x2 Base 150x150
KS02042(*)	Top 200x55 H=105x2 Base 200x150
KS02043(*)	Top 200x70 H=105x2 Base 200x150
KS02044(*)	Top 200x100 H=105x2 Base 200x150
KS02045(*)	Top 200x150 H=105x4 Base 200x150
KS02046(*)	Top 300x150 H=105x6 Base 300x150
KS02047(*)	Top 300x200 H=105x6 Base 300x200
KS02048(*)	Top 400x200 H=105x6 Base 400x200
KS02151(*)	Top 500x250 H=105x8 Base 500x250
KS02138(*)	Top 45x400 H=105x3 Base 300x150
KS02172(*)	Top 45x300 H=105x3 Base 300x150



Most Standard Sizes

All elements are sold without air fittings
Size of air fitting must be specified



“45°” Shaped
Air Fitting
Male



“L” Shaped
Air Fitting
Male



(*) Optional
Release Valve

Code	Product details
KR09001	D 6 mm - 1/4 ”
KR09002	D 8 mm - 1/4 ”
KR09003	D 10 mm - 1/4 ”
KR09004	D 12 mm - 1/4 ”

Code	Product details
KR06001	D 6 mm - 1/4 ”
KR06002	D 8 mm - 1/4 ”
KR06003	D 10 mm - 1/4 ”
KR06004	D 12 mm - 1/4 ”

Code	Product details
KS28001	1/4” Thread

Vacuum Pods H=105 Rounded Shape

[BACK TO INDEX](#)

Intermac - Northwood
Park Industries



Code	Product details
KS03045	Top Ø 80 H=105 Base Ø 80
KS03046	Top Ø 100 H=105 Base Ø 120
KS03047	Top Ø 120 H=105 Base Ø 120
KS03048	Top Ø 130 H=105 Base Ø 130
KS03049	Top Ø 150 H=105 Base Ø 150
KS03002	Top Ø 160 H=105 Base Ø 160
KS03166	Top Ø 180 H=105 Base Ø 180
KS03051	Top Ø 180 H=105 Base Ø 200
KS03052	Top Ø 200 H=105 Base Ø 200



Most Standard Sizes

All elements are sold without air fittings
Size of air fitting must be specified



**Straight
Air Fitting
Male**

Code	Product details
KR05001	D 6 mm - 1/4 "
KR05002	D 8 mm - 1/4 "
KR05003	D 10 mm - 1/4 "
KR05004	D 12 mm - 1/4 "

Vacuum Pods H=120 Square Shape

BACK TO INDEX

Denver



Code	Product details
KS01008	Top 100x100 H=120x2 Base100x100
KS01003(*)	Top 150x150 H=120x4 Base 150x150
KS01019(*)	Top 200x200 H=120x4 Base200x200

Corner Shape



Code	Product details
KS05003(*)	Top Corner 150 H=120x3 Base150x150



Most Standard Sizes

All elements are sold without air fittings
Size of air fitting must be specified



“45°” Shaped
Air Fitting
Male



“L” Shaped
Air Fitting
Male



(*) Optional
Release Valve

Code	Product details
KR09001	D 6 mm - 1/4 ”
KR09002	D 8 mm - 1/4 ”
KR09003	D 10 mm - 1/4 ”
KR09004	D 12 mm - 1/4 ”

Code	Product details
KR06001	D 6 mm - 1/4 ”
KR06002	D 8 mm - 1/4 ”
KR06003	D 10 mm - 1/4 ”
KR06004	D 12 mm - 1/4 ”

Code	Product details
KS28001	1/4” Thread

Vacuum Pods H=120 Rectangular Shape

BACK TO INDEX

Denver



Code	Product details
KS02049(*)	Top 150x70 H=120x2 Base 150x150
KS02050(*)	Top 200x55 H=120x2 Base 200x150
KS02051(*)	Top 200x70 H=120x2 Base 200x150
KS02052(*)	Top 200x100 H=120x2 Base 200x150
KS02053(*)	Top 200x150 H=120x4 Base 200x150
KS02054(*)	Top 300x150 H=120x6 Base 300x150
KS02055(*)	Top 300x200 H=120x6 Base 300x200
KS02056(*)	Top 400x200 H=120x6 Base 400x200
KS02152(*)	Top 500x250 H=120x8 Base 500x250
KS02153(*)	Top 45x400 H=120x3 Base 300x150
KS02173(*)	Top 45x300 H=120x3 Base 300x150



Most Standard Sizes

All elements are sold without air fittings
Size of air fitting must be specified



“45°” Shaped
Air Fitting
Male



“L” Shaped
Air Fitting
Male



(*) Optional
Release Valve

Code	Product details
KR09001	D 6 mm - 1/4 ”
KR09002	D 8 mm - 1/4 ”
KR09003	D 10 mm - 1/4 ”
KR09004	D 12 mm - 1/4 ”

Code	Product details
KR06001	D 6 mm - 1/4 ”
KR06002	D 8 mm - 1/4 ”
KR06003	D 10 mm - 1/4 ”
KR06004	D 12 mm - 1/4 ”

Code	Product details
KS28001	1/4” Thread

Vacuum Pods H=120 Rounded Shape

[BACK TO INDEX](#)

Denver



Code	Product details
KS03053	Top Ø 80 H=120 Base Ø 80
KS03054	Top Ø 100 H=120 Base Ø 120
KS03055	Top Ø 120 H=120 Base Ø 120
KS03142	Top Ø 130 H=120 Base Ø 130
KS03057	Top Ø 150 H=120 Base Ø 150
KS03115	Top Ø 160 H=120 Base Ø 160
KS03167	Top Ø 180 H=120 Base Ø 180
KS03059	Top Ø 180 H=120 Base Ø 200
KS03060	Top Ø 200 H=120 Base Ø 200



Most Standard Sizes

All elements are sold without air fittings
Size of air fitting must be specified



**Straight
Air Fitting
Male**

Code	Product details
KR05001	D 6 mm - 1/4 "
KR05002	D 8 mm - 1/4 "
KR05003	D 10 mm - 1/4 "
KR05004	D 12 mm - 1/4 "

BACK TO INDEX

Denver

Vacuum Pods H= 120 Square Shape



Slotted

Code	Product details
KS01040	Top 150x150 H=120x4 Base 150x150
KS01044	Top 200x200 H=120x4 Base200x200

No Slotted

Code	Product details
KS01603	Top 150x150 H=120x4 Base 150x150
KS01604	Top 200x200 H=120x4 Base200x200

All elements are sold without air fittings
Size of air fitting must be specified



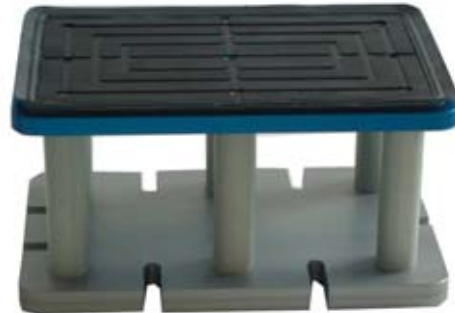
“45°” Shaped
Air Fitting
Male

Code	Product details
KR09001	D 6 mm - 1/4 ”
KR09002	D 8 mm - 1/4 ”
KR09003	D 10 mm - 1/4 ”
KR09004	D 12 mm - 1/4 ”

BACK TO INDEX

Denver

Vacuum Pods H= 120 Rectangular Shape



Slotted

Code	Product details
KG02124	Top 200x 40 H=120x2 Base 200x100
KS02121	Top 300x200 H=120x6 Base 300x200
KS02122	Top 400x200 H=120x6 Base 400x200
KS02123	Top 500x250 H=120x8 Base 500x250
KS02103	Top 45x400 H=120x3 Base 300x150

No Slotted

Code	Product details
KG02604	Top 200x 40 H=120x2 Base 200x100
KS02605	Top 300x200 H=120x4 Base 300x200
KS02606	Top 45x400 H=120x3 Base 300x150

All elements are sold without air fittings
Size of air fitting must be specified



“45°” Shaped
Air Fitting
Male

Code	Product details
KR09001	D 6 mm - 1/4 ”
KR09002	D 8 mm - 1/4 ”
KR09003	D 10 mm - 1/4 ”
KR09004	D 12 mm - 1/4 ”

BACK TO INDEX

Vacuum Pods H= 120

Rounded Shape

Denver



Slotted

Code	Product details
KS03537	Top Ø 100 H=120 Base Ø 130
KS03546	Top Ø 130 H=120 Base Ø 130
KS03548	Top Ø 160 H=120 Base Ø 200
KS03550	Top Ø 200 H=120 Base Ø 200

No Slotted

Code	Product details
KS03605	Top Ø 100 H=120 Base Ø 130
KS03606	Top Ø 130 H=120 Base Ø 130
KS03607	Top Ø 160 H=120 Base Ø 200
KS03608	Top Ø 200 H=120 Base Ø 200

All elements are sold without air fittings
Size of air fitting must be specified



Straight
Air Fitting
Male

Code	Product details
KR05001	D 6 mm - 1/4 "
KR05002	D 8 mm - 1/4 "
KR05003	D 10 mm - 1/4 "
KR05004	D 12 mm - 1/4 "

Vacuum Pods H=124.5 Square Shape

[BACK TO INDEX](#)

Bavelloni



Code	Product details
KS01020	Top 100x100 H=124.5x2 Base100x100
KS01021(*)	Top 150x150 H=124.5x4 Base 150x150
KS01022(*)	Top 200x200 H=124.5x4 Base200x200

Corner Shape



Code	Product details
KS05004(*)	Top Corner 150 H=124.5x3 Base150x150



Most Standard Sizes

All elements are sold without air fittings
Size of air fitting must be specified



“45°” Shaped
Air Fitting
Male



“L” Shaped
Air Fitting
Male



(*) Optional
Release Valve

Code	Product details
KR09001	D 6 mm - 1/4 ”
KR09002	D 8 mm - 1/4 ”
KR09003	D 10 mm - 1/4 ”
KR09004	D 12 mm - 1/4 ”

Code	Product details
KR06001	D 6 mm - 1/4 ”
KR06002	D 8 mm - 1/4 ”
KR06003	D 10 mm - 1/4 ”
KR06004	D 12 mm - 1/4 ”

Code	Product details
KS28001	1/4” Thread

Vacuum Pods H=124.5 Rectangular Shape

BACK TO INDEX

Bavelloni



Code	Product details
KS02057(*)	Top 150x70 H=124.5x2 Base 150x150
KS02058(*)	Top 200x55 H=124.5x2 Base 200x150
KS02059(*)	Top 200x70 H=124.5x2 Base 200x150
KS02060(*)	Top 200x100 H=124.5x2 Base 200x150
KS02061(*)	Top 200x150 H=124.5x4 Base 200x150
KS02062(*)	Top 300x150 H=124.5x6 Base 300x150
KS02063(*)	Top 300x200 H=124.5x6 Base 300x200
KS02064(*)	Top 400x200 H=124.5x6 Base 400x200
KS02156(*)	Top 500x250 H=124.5x8 Base 500x250
KS02157(*)	Top 45x400 H=124.5x3 Base 300x150
KS02174(*)	Top 45x300 H=124.5x3 Base 300x150



Most Standard Sizes

All elements are sold without air fittings
Size of air fitting must be specified



“45°” Shaped
Air Fitting
Male



“L” Shaped
Air Fitting
Male



(*) Optional
Release Valve

Code	Product details
KR09001	D 6 mm - 1/4 ”
KR09002	D 8 mm - 1/4 ”
KR09003	D 10 mm - 1/4 ”
KR09004	D 12 mm - 1/4 ”

Code	Product details
KR06001	D 6 mm - 1/4 ”
KR06002	D 8 mm - 1/4 ”
KR06003	D 10 mm - 1/4 ”
KR06004	D 12 mm - 1/4 ”

Code	Product details
KS28001	1/4” Thread

Vacuum Pods H=124.5 Rounded Shape

[BACK TO INDEX](#)

Bavelloni



Code	Product details
KS03061	Top Ø 80 H=124.5 Base Ø 80
KS03062	Top Ø 100 H=124.5 Base Ø 120
KS03063	Top Ø 120 H=124.5 Base Ø 120
KS03143	Top Ø 130 H=124.5 Base Ø 130
KS03065	Top Ø 150 H=124.5 Base Ø 150
KS03116	Top Ø 160 H=124.5 Base Ø 160
KS03168	Top Ø 180 H=124.5 Base Ø 180
KS03067	Top Ø 180 H=124.5 Base Ø 200
KS03068	Top Ø 200 H=124.5 Base Ø 200



Most Standard Sizes

All elements are sold without air fittings
Size of air fitting must be specified



**Straight
Air Fitting
Male**

Code	Product details
KR05001	D 6 mm - 1/4 "
KR05002	D 8 mm - 1/4 "
KR05003	D 10 mm - 1/4 "
KR05004	D 12 mm - 1/4 "

Vacuum Pods H=140 Square Shape

[BACK TO INDEX](#)

Bimatech



Code	Product details
KS01004	Top 100x100 H=140x2 Base100x100
KS01005(*)	Top 150x150 H=140x4 Base 150x150
KS01006(*)	Top 200x200 H=140x4 Base200x200

Corner Shape



Code	Product details
KS05005(*)	Top Corner 150 H=140x3 Base150x150



Most Standard Sizes

All elements are sold without air fittings
Size of air fitting must be specified



“45°” Shaped
Air Fitting
Male



“L” Shaped
Air Fitting
Male



(*) Optional
Release Valve

Code	Product details
KR09001	D 6 mm - 1/4 ”
KR09002	D 8 mm - 1/4 ”
KR09003	D 10 mm - 1/4 ”
KR09004	D 12 mm - 1/4 ”

Code	Product details
KR06001	D 6 mm - 1/4 ”
KR06002	D 8 mm - 1/4 ”
KR06003	D 10 mm - 1/4 ”
KR06004	D 12 mm - 1/4 ”

Code	Product details
KS28001	1/4” Thread

Vacuum Pods H=140 Rectangular Shape

BACK TO INDEX

Bimatech



Code	Product details
KS02014(*)	Top 150x70 H=140x2 Base 150x150
KS02008(*)	Top 200x55 H=140x2 Base 200x150
KS02009(*)	Top 200x70 H=140x2 Base 200x150
KS02010(*)	Top 200x100 H=140x2 Base 200x150
KS02011(*)	Top 200x150 H=140x4 Base 200x150
KS02012(*)	Top 300x150 H=140x6 Base 300x150
KS02013(*)	Top 300x200 H=140x6 Base 300x200
KS02015(*)	Top 400x200 H=140x6 Base 400x200
KS02154(*)	Top 500x250 H=140x8 Base 500x250
KS02155(*)	Top 45x400 H=140x3 Base 300x150
KS02175(*)	Top 45x300 H=140x3 Base 300x150



Most Standard Sizes

All elements are sold without air fittings
Size of air fitting must be specified



“45°” Shaped
Air Fitting
Male



“L” Shaped
Air Fitting
Male



(*) Optional
Release Valve

Code	Product details
KR09001	D 6 mm - 1/4 ”
KR09002	D 8 mm - 1/4 ”
KR09003	D 10 mm - 1/4 ”
KR09004	D 12 mm - 1/4 ”

Code	Product details
KR06001	D 6 mm - 1/4 ”
KR06002	D 8 mm - 1/4 ”
KR06003	D 10 mm - 1/4 ”
KR06004	D 12 mm - 1/4 ”

Code	Product details
KS28001	1/4” Thread

Vacuum Pods H=140 Rounded Shape

[BACK TO INDEX](#)

Bimatech



Code	Product details
KS03010	Top Ø 80 H=140 Base Ø 80
KS03011	Top Ø 100 H=140 Base Ø 120
KS03012	Top Ø 120 H=140 Base Ø 120
KS03144	Top Ø 130 H=140 Base Ø 130
KS03014	Top Ø 150 H=140 Base Ø 150
KS03117	Top Ø 160 H=140 Base Ø 160
KS03169	Top Ø 180 H=140 Base Ø 180
KS03016	Top Ø 180 H=140 Base Ø 200
KS03017	Top Ø 200 H=140 Base Ø 200



Most Standard Sizes

All elements are sold without air fittings
Size of air fitting must be specified



**Straight
Air Fitting
Male**

Code	Product details
KR05001	D 6 mm - 1/4 "
KR05002	D 8 mm - 1/4 "
KR05003	D 10 mm - 1/4 "
KR05004	D 12 mm - 1/4 "

Vacuum Pods H=150 Square Shape

BACK TO INDEX

Thibaut



Code	Product details
KS01023	Top 100x100 H=150x2 Base100x100
KS01024(*)	Top 150x150 H=150x4 Base 150x150
KS01025(*)	Top 200x200 H=150x4 Base200x200

Corner Shape



Code	Product details
KS05006(*)	Top Corner 150 H=150x3 Base150x150

 Most Standard Sizes

All elements are sold without air fittings
Size of air fitting must be specified



“45°” Shaped
Air Fitting
Male



“L” Shaped
Air Fitting
Male



(*) Optional
Release Valve

Code	Product details
KR09001	D 6 mm - 1/4 ”
KR09002	D 8 mm - 1/4 ”
KR09003	D 10 mm - 1/4 ”
KR09004	D 12 mm - 1/4 ”

Code	Product details
KR06001	D 6 mm - 1/4 ”
KR06002	D 8 mm - 1/4 ”
KR06003	D 10 mm - 1/4 ”
KR06004	D 12 mm - 1/4 ”

Code	Product details
KS28001	1/4” Thread

Vacuum Pods H=150 Rectangular Shape

BACK TO INDEX

Thibaut



Code	Product details
KS02065(*)	Top 150x70 H=150x2 Base 150x150
KS02066(*)	Top 200x55 H=150x2 Base 200x150
KS02067(*)	Top 200x70 H=150x2 Base 200x150
KS02068(*)	Top 200x100 H=150x2 Base 200x150
KS02069(*)	Top 200x150 H=150x4 Base 200x150
KS02070(*)	Top 300x150 H=150x6 Base 300x150
KS02071(*)	Top 300x200 H=150x6 Base 300x200
KS02072(*)	Top 400x200 H=150x6 Base 400x200
KS02149(*)	Top 500x250 H=150x8 Base 500x250
KS02139(*)	Top 45x400 H=150x3 Base 300x150
KS02176(*)	Top 45x300 H=150x3 Base 300x150



Most Standard Sizes

All elements are sold without air fittings
Size of air fitting must be specified



“45°” Shaped
Air Fitting
Male



“L” Shaped
Air Fitting
Male



(*) Optional
Release Valve

Code	Product details
KR09001	D 6 mm - 1/4 ”
KR09002	D 8 mm - 1/4 ”
KR09003	D 10 mm - 1/4 ”
KR09004	D 12 mm - 1/4 ”

Code	Product details
KR06001	D 6 mm - 1/4 ”
KR06002	D 8 mm - 1/4 ”
KR06003	D 10 mm - 1/4 ”
KR06004	D 12 mm - 1/4 ”

Code	Product details
KS28001	1/4” Thread

Vacuum Pods H=150 Rounded Shape

[BACK TO INDEX](#)

Thibaut



Code	Product details
KS03069	Top Ø 80 H=150 Base Ø 80
KS03070	Top Ø 100 H=150 Base Ø 120
KS03071	Top Ø 120 H=150 Base Ø 120
KS03140	Top Ø 130 H=150 Base Ø 130
KS03073	Top Ø 150 H=150 Base Ø 150
KS03118	Top Ø 160 H=150 Base Ø 160
KS03170	Top Ø 180 H=150 Base Ø 180
KS03075	Top Ø 180 H=150 Base Ø 200
KS03076	Top Ø 200 H=150 Base Ø 200



Most Standard Sizes

All elements are sold without air fittings
Size of air fitting must be specified



**Straight
Air Fitting
Male**

Code	Product details
KR05001	D 6 mm - 1/4 "
KR05002	D 8 mm - 1/4 "
KR05003	D 10 mm - 1/4 "
KR05004	D 12 mm - 1/4 "

BACK TO INDEX

Vacuum Pods H= 150 Square Shape

Breton



Slotted

Code	Product details
KS01101	Top 150x150 H=150x4 Base 150x150
KS01102	Top 200x200 H=150x4 Base200x200

No Slotted

Code	Product details
KS01605	Top 150x150 H=150x4 Base 150x150
KS01606	Top 200x200 H=150x4 Base200x200

All elements are sold without air fittings
Size of air fitting must be specified



**“45°” Shaped
Air Fitting
Male**

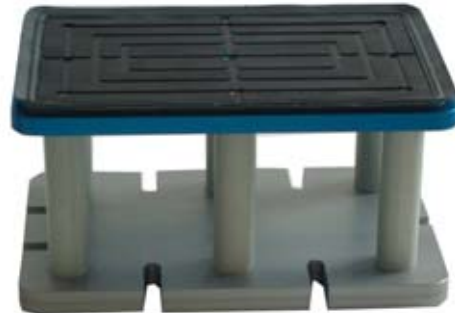
Code	Product details
KR09001	D 6 mm - 1/4 ”
KR09002	D 8 mm - 1/4 ”
KR09003	D 10 mm - 1/4 ”
KR09004	D 12 mm - 1/4 ”

BACK TO INDEX

Vacuum Pods H= 150

Rectangular Shape

Breton



Slotted

Code	Product details
KG02104	Top 200x 40 H=150x2 Base 200x100
KS02112	Top 300x200 H=150x6 Base 300x200
KS02113	Top 400x200 H=150x6 Base 400x200
KS02114	Top 500x250 H=150x8 Base 500x250
KS02115	Top 45x400 H=150x3 Base 300x150

No Slotted

Code	Product details
KG02607	Top 200x 40 H=150x2 Base 200x100
KS02608	Top 300x200 H=150x4 Base 300x200
KS02609	Top 45x400 H=150x3 Base 300x150

All elements are sold without air fittings
Size of air fitting must be specified



“45°” Shaped
Air Fitting
Male

Code	Product details
KR09001	D 6 mm - 1/4 ”
KR09002	D 8 mm - 1/4 ”
KR09003	D 10 mm - 1/4 ”
KR09004	D 12 mm - 1/4 ”

BACK TO INDEX

Vacuum Pods H= 150

Rounded Shape

Breton



Slotted

Code	Product details
KS03551	Top Ø 100 H=150 Base Ø 130
KS03552	Top Ø 130 H=150 Base Ø 130
KS03553	Top Ø 160 H=150 Base Ø 200
KS03554	Top Ø 200 H=150 Base Ø 200

No Slotted

Code	Product details
KS03609	Top Ø 100 H=150 Base Ø 130
KS03610	Top Ø 130 H=150 Base Ø 130
KS03611	Top Ø 160 H=150 Base Ø 200
KS03612	Top Ø 200 H=150 Base Ø 200

All elements are sold without air fittings
Size of air fitting must be specified



Straight
Air Fitting
Male

Code	Product details
KR05001	D 6 mm - 1/4 "
KR05002	D 8 mm - 1/4 "
KR05003	D 10 mm - 1/4 "
KR05004	D 12 mm - 1/4 "

Vacuum Pods H=160 Square Shape

[BACK TO INDEX](#)

Omag



Code	Product details
KS01051	Top 100x100 H=160x2 Base100x100
KS01052(*)	Top 150x150 H=160x4 Base 150x150
KS01053(*)	Top 200x200 H=160x4 Base200x200

Corner Shape



Code	Product details
KS05007(*)	Top Corner 150 H=160x3 Base150x150



Most Standard Sizes

All elements are sold without air fittings
Size of air fitting must be specified



“45°” Shaped
Air Fitting
Male



“L” Shaped
Air Fitting
Male



(*) Optional
Release Valve

Code	Product details
KR09001	D 6 mm - 1/4 ”
KR09002	D 8 mm - 1/4 ”
KR09003	D 10 mm - 1/4 ”
KR09004	D 12 mm - 1/4 ”

Code	Product details
KR06001	D 6 mm - 1/4 ”
KR06002	D 8 mm - 1/4 ”
KR06003	D 10 mm - 1/4 ”
KR06004	D 12 mm - 1/4 ”

Code	Product details
KS28001	1/4” Thread

Vacuum Pods H=160 Rectangular Shape

BACK TO INDEX

Omag



Code	Product details
KS02161(*)	Top 150x70 H=160x2 Base 150x150
KS02162(*)	Top 200x55 H=160x2 Base 200x150
KS02163(*)	Top 200x70 H=160x2 Base 200x150
KS02164(*)	Top 200x100 H=160x2 Base 200x150
KS02165(*)	Top 200x150 H=160x4 Base 200x150
KS02166(*)	Top 300x150 H=160x6 Base 300x150
KS02167(*)	Top 300x200 H=160x6 Base 300x200
KS02168(*)	Top 400x200 H=160x6 Base 400x200
KS02169(*)	Top 500x250 H=160x8 Base 500x250
KS02170(*)	Top 45x400 H=160x3 Base 300x150
KS02181(*)	Top 45x300 H=160x3 Base 300x150



Most Standard Sizes

All elements are sold without air fittings
Size of air fitting must be specified



“45°” Shaped
Air Fitting
Male



“L” Shaped
Air Fitting
Male



(*) Optional
Release Valve

Code	Product details
KR09001	D 6 mm - 1/4 ”
KR09002	D 8 mm - 1/4 ”
KR09003	D 10 mm - 1/4 ”
KR09004	D 12 mm - 1/4 ”

Code	Product details
KR06001	D 6 mm - 1/4 ”
KR06002	D 8 mm - 1/4 ”
KR06003	D 10 mm - 1/4 ”
KR06004	D 12 mm - 1/4 ”

Code	Product details
KS28001	1/4” Thread

Vacuum Pods H=160 Rounded Shape

[BACK TO INDEX](#)

Omag



Code	Product details
KS03178	Top Ø 80 H=160 Base Ø 80
KS03179	Top Ø 100 H=160 Base Ø 120
KS03180	Top Ø 120 H=160 Base Ø 120
KS03181	Top Ø 130 H=160 Base Ø 130
KS03182	Top Ø 150 H=160 Base Ø 150
KS03183	Top Ø 160 H=160 Base Ø 160
KS03184	Top Ø 180 H=160 Base Ø 180
KS03185	Top Ø 180 H=160 Base Ø 200
KS03186	Top Ø 200 H=160 Base Ø 200



Most Standard Sizes

All elements are sold without air fittings
Size of air fitting must be specified



**Straight
Air Fitting
Male**

Code	Product details
KR05001	D 6 mm - 1/4 "
KR05002	D 8 mm - 1/4 "
KR05003	D 10 mm - 1/4 "
KR05004	D 12 mm - 1/4 "

Vacuum Pods H=200 Square Shape

BACK TO INDEX

Brembana



Code	Product details
KS01029	Top 100x100 H=200x2 Base100x100
KS01030(*)	Top 150x150 H=200x4 Base 150x150
KS01031(*)	Top 200x200 H=200x4 Base200x200

Corner Shape



Code	Product details
KS05008(*)	Top Corner 150 H=200x3 Base150x150



Most Standard Sizes

All elements are sold without air fittings
Size of air fitting must be specified



“45°” Shaped
Air Fitting
Male



“L” Shaped
Air Fitting
Male



(*) Optional
Release Valve

Code	Product details
KR09001	D 6 mm - 1/4 ”
KR09002	D 8 mm - 1/4 ”
KR09003	D 10 mm - 1/4 ”
KR09004	D 12 mm - 1/4 ”

Code	Product details
KR06001	D 6 mm - 1/4 ”
KR06002	D 8 mm - 1/4 ”
KR06003	D 10 mm - 1/4 ”
KR06004	D 12 mm - 1/4 ”

Code	Product details
KS28001	1/4” Thread

Vacuum Pods H=200 Rectangular Shape

BACK TO INDEX

Brembana



Code	Product details
KS02081(*)	Top 150x70 H=200x2 Base 150x150
KS02082(*)	Top 200x55 H=200x2 Base 200x150
KS02083(*)	Top 200x70 H=200x2 Base 200x150
KS02084(*)	Top 200x100 H=200x2 Base 200x150
KS02085(*)	Top 200x150 H=200x4 Base 200x150
KS02086(*)	Top 300x150 H=200x6 Base 300x150
KS02087(*)	Top 300x200 H=200x6 Base 300x200
KS02088(*)	Top 400x200 H=200x6 Base 400x200
KS02157(*)	Top 500x250 H=200x8 Base 500x250
KS02142(*)	Top 45x400 H=200x3 Base 300x150
KS02178(*)	Top 45x300 H=200x3 Base 300x150



Most Standard Sizes

All elements are sold without air fittings
Size of air fitting must be specified



“45°” Shaped
Air Fitting
Male



“L” Shaped
Air Fitting
Male



(*) Optional
Release Valve

Code	Product details
KR09001	D 6 mm - 1/4 ”
KR09002	D 8 mm - 1/4 ”
KR09003	D 10 mm - 1/4 ”
KR09004	D 12 mm - 1/4 ”

Code	Product details
KR06001	D 6 mm - 1/4 ”
KR06002	D 8 mm - 1/4 ”
KR06003	D 10 mm - 1/4 ”
KR06004	D 12 mm - 1/4 ”

Code	Product details
KS28001	1/4” Thread

Vacuum Pods H=200 Rounded Shape

[BACK TO INDEX](#)

Brembana



Code	Product details
KS03085	Top Ø 80 H=200 Base Ø 80
KS03086	Top Ø 100 H=200 Base Ø 120
KS03087	Top Ø 120 H=200 Base Ø 120
KS03144	Top Ø 130 H=200 Base Ø 130
KS03089	Top Ø 150 H=200 Base Ø 150
KS03120	Top Ø 160 H=200 Base Ø 160
KS03172	Top Ø 180 H=200 Base Ø 180
KS03091	Top Ø 180 H=200 Base Ø 200
KS03092	Top Ø 200 H=200 Base Ø 200



Most Standard Sizes

All elements are sold without air fittings
Size of air fitting must be specified



**Straight
Air Fitting
Male**

Code	Product details
KR05001	D 6 mm - 1/4 "
KR05002	D 8 mm - 1/4 "
KR05003	D 10 mm - 1/4 "
KR05004	D 12 mm - 1/4 "

Vacuum Pods H=213 Square Shape

[BACK TO INDEX](#)

Intermac Plus



Code	Product details
KS01032	Top 100x100 H=213x2 Base100x100
KS01033(*)	Top 150x150 H=213x4 Base 150x150
KS01034(*)	Top 200x200 H=213x4 Base200x200

Corner Shape



Code	Product details
KS05009(*)	Top Corner 150 H=213x3 Base150x150



Most Standard Sizes

All elements are sold without air fittings
Size of air fitting must be specified



“45°” Shaped
Air Fitting
Male



“L” Shaped
Air Fitting
Male



(*) Optional
Release Valve

Code	Product details
KR09001	D 6 mm - 1/4 ”
KR09002	D 8 mm - 1/4 ”
KR09003	D 10 mm - 1/4 ”
KR09004	D 12 mm - 1/4 ”

Code	Product details
KR06001	D 6 mm - 1/4 ”
KR06002	D 8 mm - 1/4 ”
KR06003	D 10 mm - 1/4 ”
KR06004	D 12 mm - 1/4 ”

Code	Product details
KS28001	1/4” Thread

Vacuum Pods H=213 Rectangular Shape

[BACK TO INDEX](#)

Intermac Plus



Code	Product details
KS02089(*)	Top 150x70 H=213x2 Base 150x150
KS02090(*)	Top 200x55 H=213x2 Base 200x150
KS02091(*)	Top 200x70 H=213x2 Base 200x150
KS02092(*)	Top 200x100 H=213x2 Base 200x150
KS02093(*)	Top 200x150 H=213x4 Base 200x150
KS02094(*)	Top 300x150 H=213x6 Base 300x150
KS02095(*)	Top 300x200 H=213x6 Base 300x200
KS02096(*)	Top 400x200 H=213x6 Base 400x200
KS02158(*)	Top 500x250 H=213x8 Base 500x250
KS02159(*)	Top 45x400 H=213x3 Base 300x150
KS02179(*)	Top 45x300 H=213x3 Base 300x150

 Most Standard Sizes

All elements are sold without air fittings
Size of air fitting must be specified



“45°” Shaped
Air Fitting
Male



“L” Shaped
Air Fitting
Male



(*) Optional
Release Valve

Code	Product details
KR09001	D 6 mm - 1/4 ”
KR09002	D 8 mm - 1/4 ”
KR09003	D 10 mm - 1/4 ”
KR09004	D 12 mm - 1/4 ”

Code	Product details
KR06001	D 6 mm - 1/4 ”
KR06002	D 8 mm - 1/4 ”
KR06003	D 10 mm - 1/4 ”
KR06004	D 12 mm - 1/4 ”

Code	Product details
KS28001	1/4” Thread

Vacuum Pods H=213 Rounded Shape

[BACK TO INDEX](#)

Intermac Plus



Code	Product details
KS03093	Top Ø 80 H=213 Base Ø 80
KS03094	Top Ø 100 H=213 Base Ø 120
KS03095	Top Ø 120 H=213 Base Ø 120
KS03145	Top Ø 130 H=213 Base Ø 130
KS03097	Top Ø 150 H=213 Base Ø 150
KS03121	Top Ø 160 H=213 Base Ø 160
KS03173	Top Ø 180 H=213 Base Ø 180
KS03099	Top Ø 180 H=213 Base Ø 200
KS03100	Top Ø 200 H=213 Base Ø 200



Most Standard Sizes

All elements are sold without air fittings
Size of air fitting must be specified



**Straight
Air Fitting
Male**

Code	Product details
KR05001	D 6 mm - 1/4 "
KR05002	D 8 mm - 1/4 "
KR05003	D 10 mm - 1/4 "
KR05004	D 12 mm - 1/4 "

BACK TO INDEX

Vacuum Pods H= 240 Square Shape

Prussiani



Slotted

Code	Product details
KS01103	Top 150x150 H=240x4 Base 150x150
KS01104	Top 200x200 H=240x4 Base200x200

No Slotted

Code	Product details
KS01607	Top 150x150 H=240x4 Base 150x150
KS01608	Top 200x200 H=240x4 Base200x200

All elements are sold without air fittings
Size of air fitting must be specified



“45°” Shaped
Air Fitting
Male

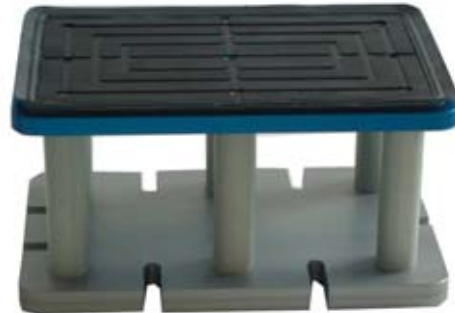
Code	Product details
KR09001	D 6 mm - 1/4 ”
KR09002	D 8 mm - 1/4 ”
KR09003	D 10 mm - 1/4 ”
KR09004	D 12 mm - 1/4 ”

BACK TO INDEX

Vacuum Pods H= 240

Rectangular Shape

Prussiani



Slotted

Code	Product details
KG02117	Top 200x 40 H=240x2 Base 200x100
KS02182	Top 300x200 H=240x6 Base 300x200
KS02183	Top 400x200 H=240x6 Base 400x200
KS02184	Top 500x250 H=240x8 Base 500x250
KS02185	Top 45x400 H=240x3 Base 300x150

No Slotted

Code	Product details
KG02610	Top 200x 40 H=240x2 Base 200x100
KS02611	Top 300x200 H=240x4 Base 300x200
KS02612	Top 45x400 H=240x3 Base 300x150

All elements are sold without air fittings
Size of air fitting must be specified



“45°” Shaped
Air Fitting
Male

Code	Product details
KR09001	D 6 mm - 1/4 ”
KR09002	D 8 mm - 1/4 ”
KR09003	D 10 mm - 1/4 ”
KR09004	D 12 mm - 1/4 ”

BACK TO INDEX

Vacuum Pods H= 240

Rounded Shape

Prussiani



Slotted

Code	Product details
KS03555	Top Ø 100 H=240 Base Ø 130
KS03556	Top Ø 130 H=240 Base Ø 130
KS03557	Top Ø 160 H=240 Base Ø 200
KS03558	Top Ø 200 H=240 Base Ø 200



Prussiani Base

Code	Product details
KS03701	Top Ø 100 H=240 Base Prussiani
KS03702	Top Ø 130 H=240 Base Prussiani
KS03703	Top Ø 160 H=240 Base Prussiani
KS03704	Top Ø 200 H=240 Base Prussiani

All elements are sold without air fittings
Size of air fitting must be specified



Straight Air Fitting Male

Code	Product details
KR05001	D 6 mm - 1/4 "
KR05002	D 8 mm - 1/4 "
KR05003	D 10 mm - 1/4 "
KR05004	D 12 mm - 1/4 "

[BACK TO INDEX](#)

Accessories



Reference Rod

Code	Product details
KS07004	Pin Stop Ø 26 H140 Intermac
KS07104	Plastic Rod Ø 26 Intermac (spare)
KS07003	Pin Stop Ø 39 H180 Thibaut
KS07103	Plastic Rod Ø 39 Thibaut (spare)
KS07005	Pin Stop Ø 35 H230 Brembana
KS07105	Plastic Rod Ø 35 Bremabana (spare)



Drilling Support

Code	Product details
KS11301	Height 100 - 105 mm
KS11302	Height 120 - 124.5mm
KS11303	Height 150 mm
KS11304	Height 200 mm
KS11305	Height 240 mm
KS11400	Backing Pad Replacement

Size of air fitting must be specified

BACK TO INDEX

Accessories



Retractable Suction Cup

Code	Product details
KS09004	Height Min=51mm—Max 100mm
KS09005	Height Min=56mm—Max 105mm



Retractable Suction Cup

Code	Product details
KS09006	Height Min=71mm—Max 120mm
KS09007	Height Min=75.5mm—Max 124.5mm
KS09008	Height Min=91mm—Max 140mm
KS09009	Height Min=101mm—Max 150mm
KS09010	Height Min=111mm—Max 160mm



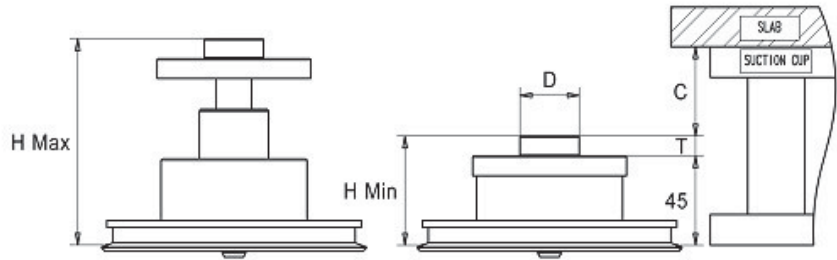
Retractable Suction Cup

Code	Product details
KS09001	Height Min=125mm—Max 200mm
KS09002	Height Min=138mm—Max 213mm
KS09003	Height Min=165mm—Max 240mm

Size of air fitting must be specified

BACK TO INDEX

Retractable Reference Cylinder



Machine	Height (mm)	Code	D (mm)	T (mm)	H min (mm)	H max (mm)	C (mm)
Brembana	100	KB08001	30	10	55	104	45
			30	25	70	119	30
Intermac	105	KB08002	30	17.5	62.5	111.5	42.5
Denver	120	KB08003	20	32.5	77.5	126.5	42.5
Bavelloni	124.5	KB08004	30	37	82	131	42.5
Bimatech	140	KB08005	30	52.5	97.5	146.5	42.5

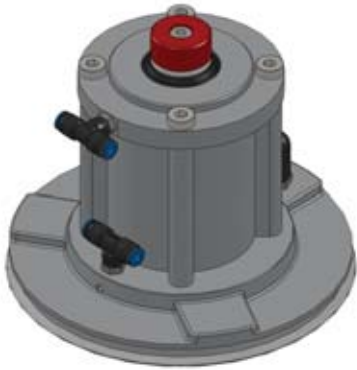
SPARE Plastic Cylinder (T)

Code	D (mm)	T (mm)
KB09001	30	10
KB09002	30	17.5
KB09006	30	25
KB09003	20	32.5
KB09004	30	37.5
KB09005	30	52.5

All elements are sold without air fittings
Size of air fitting must be specified

[BACK TO INDEX](#)

Accessories



Retractable Reference Cylinder

Code	Product details
KS08001	H=200 (T=17)
KS08002	H=213 (T=30)
KS08003	H=240 (T=57)

SPARE Plastic Cylinder (T)

Code	D (mm)	T (mm)
KB09007	35	17
KB09008	35	30
KB09009	35	57

Manifold



Code	Product details
KS33003	Manifold

Size of air fitting must be specified

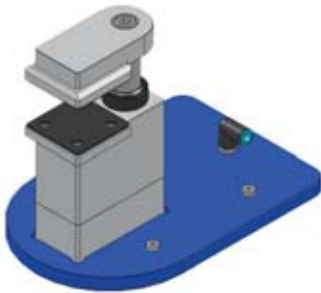
BACK TO INDEX

Accessories



Manual Clamp

<i>Code</i>	<i>Product details</i>
KS31002	Min 24mm Max 40 mm



Mechanical Clamp

<i>Code</i>	<i>Product details</i>
KS06013	H=105
KS06014	H=120
KS06015	H=124.5
KS06016	H=140
KS06018	H=150
KS06017	H=160
KS06019	H=200
KS06021	H=213
KS06022	H=240

Size of air fitting must be specified

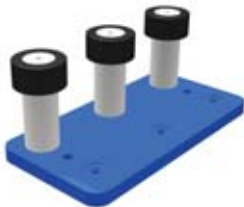
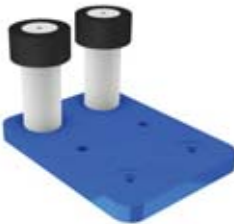
[BACK TO INDEX](#)

Accessories



Pneumatic Clamps

<i>Code</i>	<i>Product details</i>
KS06002	H=100
KS06003	H=105
KS06004	H=120
KS06005	H=124.5
KS06001	H=140
KS06006	H=150
KS06007	H=160
KS06008	H=200
KS06009	H=213
KS06010	H=240



Vacuum Fences

<i>Code</i>	<i>Product details</i>
KS12001	Double H=105 Base 200x150
KS12002	Triple H=105 Base 300x150
KS12003	Double H=200 Base 200x150
KS12004	Triple H=200 Base 300x150

Size of air fitting must be specified

BACK TO INDEX

Accessories

“T” Shaped Air Fitting - Male



Code	Product details
KR08001	D. 6 mm - 1/4 ”
KR08002	D. 8 mm - 1/4 ”
KR08003	D.10 mm - 1/4 ”
KR08004	D.12 mm - 1/4 ”

Plug For “T” Shape Air Fitting



Code	Product details
KR04001	D. 6 mm
KR04002	D. 8 mm
KR04003	D.10 mm
KR04004	D.12 mm

Threaded O-Ring Sealed Plug



Code	Product details
KR03001	1/4”

Valve



Code	Product details
KR01001	Female - Female
KR02001	Male - Female

Cnc Table & Pods Grinding Tools



Code	Product details
KG25001	D.106 F=35 4 Inserts

[BACK TO INDEX](#)

Accessories



Lip Rubber Seals for Square Shape Plates

Code	Product details
KS23102	100 x 100
KS23103	150 x 150
KS23104	200 x 200
KG23103	150x150 (for L Shape)



Lip Rubber Seals for Rectangular Shape Plates

Code	Product details
KS23201	150 x 70
KS23202	200 x 55
KS23203	200 x 70
KS23204	200 x 100
KS23205	200 x 150
KS23206	300 x 150
KS23207	300 x 200
KS23208	400 x 200
KS23209	500 x 250
KG23212	45 x 400
KG23214	45 x 300



Lip Rubber Seals for Round Shape Plates

Code	Product details
KS23301	80
KS23302	100
KS23303	120
KS23304	130
KS23305	150
KS23306	160
KS23307	180
KS23308	200



ADI S.p.A.
Via dell'Economia, 12/16 - 36016 Thiene (VI) Italy
Tel: +39.0445.360244 Fax: +39.0445.366862
info@aditools.com - www.aditools.com

ADI USA Inc.
1477 Connelly Springs Rd 28645 Lenoir / North Carolina - USA
Tel. 1-828-7284711 - Fax 1-828-7289613
info@aditools-usa.com - www.aditools-usa.com