

Catalogue 2014

THE
PERMANENT
VALUE

ADI

INDUSTRIAL DIAMOND APPLICATION

ADVANCED **STONE**
TOOL TECHNOLOGY

CNC Marble

INDEX

Finger Bit with 1/2" Gas Connection for Marble	Page	3
Step Cutting Bit	Page	4
Core Drills	Page	5
Tools for Drain Boards	Page	6 - 8
Cnc Profiles Set for Marble Bore 35mm Internal Diameter 55mm	Page	9 - 10
Wheels for Solid Sink Execution	Page	11
Electroplated Diamond Blades	Page	12
Electroplated Saw Blades to Shape	Page	13
Electroplated Tools for Engraving Marble	Page	14 - 20
Electroplated Tools for Engraving Granite	Page	21 - 23
Premium Adaptor for Engraving tools & Spare Parts	Page	24

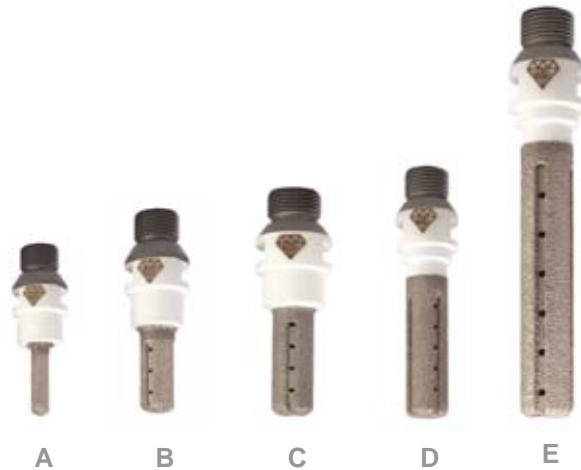
Finger Bit with 1/2" Gas Connection for Marble

[BACK TO INDEX](#)



Electroplated Finger Bit
For Marble

ADI CODE	DIMENSION [DxL]	TYPE	RPM	FEED [mm/min]
PB25261	12x35	A	5.500-6.500	100-300
PB25008	16x35	B	5.500	400-600
PB25026	16x45	C	5.500	400-600
PB25002	20x65	D	5.200	300-450
PB25003	20x110	E	5.000	200-350



Vacuum Brazed Finger Bit
For Marble

ADI CODE	DIMENSION [DxL]	TYPE	RPM	FEED [mm/min]
PB52092	10x35	A	5.500-6.500	100-300
PB52004	16x35	B	5.500	400-600
PB52005	16x45	C	5.500	400-600
PB52006	20x65	D	5.200	300-450
PB52111	20x110	E	5.000	200-350

[BACK TO INDEX](#)



Step Cutting Bit Electroplated

ADI CODE	DIMENSION [DxL]	Fitting	RPM	FEED [mm/min]	Stock Removal [mm]
PB25270	20x10	M10	5.000-6.000	1.000	1-3
PB25268	20x10	M12	5.000-6.000	1.000	1-3



Step Cutting Bit Sintered for Marble

ADI CODE	DIMENSION [DxL]	Fitting	RPM	FEED [mm/min]	Stock Removal [mm]
PB27162	20/14x12	M10	7.000-7.500	700-1.000	3 max
PR06010	20/14x12	M12	7.000-7.500	700-1.000	3 max
PR06028	30/24x12	M18	6.000-7.000	700-1.000	3 max



Adaptors for Step Cutting Tools

ADI Code	Description	Fitting
SL02223	Adaptor M10 Female LU=55	A=1/2"
SL02219	Adaptor M12 Female LU=55	A=1/2"
SL02518	Adaptor M18 Female LU=90	A=1/2"

BACK TO INDEX



Vacuum Brazed Core Drills

ADI CODE	DIMENSION [DxL]	Fitting	RPM	FEED [mm/min]
PG18020	20 LU=55	A=1/2"	2.800-3.500	60-120
PG18035	35 LU=55	A=1/2"	2.300-2.800	60-120
PG18280	80 LU=200	A=1/2"	1.000-1.500	50-100



Sintered Core Drills for Marble

ADI CODE	DIMENSION [DxL]	Fitting	RPM	FEED [mm/min]
PG09172	20 LU=55	A=1/2"	2.800-3.500	60-120
PG09139	35 LU=55	A=1/2"	2.000-2.500	60-120
PG11090	80 LU=200	A=1/2"	1.000-1.500	50-100



Extensions Gas Male - Gas Female

ADI CODE	Description
SL02208	A=1/2"G L=100 F=1/2"G
SL02343	A=1/2"G L=150 F=1/2"G
SL02382	A=1/2"G L=200 F=1/2"G
SL02217	A=1/2"G L=300 F=1/2"G

Electroplated Tools for Drain Board

[BACK TO INDEX](#)



Type	ADI CODE	DIMENSION [DxL]	Fitting	RPM	FEED [mm/min]	Stock Removal [mm]
A	PB29083	85x20 (3+3)	50 mm	5.000-6.000	600-1.200	1-5 Max
B	PB29015	72 (3 Holes)	1/2" Gas	-	-	
C	SL01050	72 (3 Holes)	35 mm	-	-	
D	PB29727	72 PLATE	50 mm	5.000-6.000	600-1.200	1-5 Max



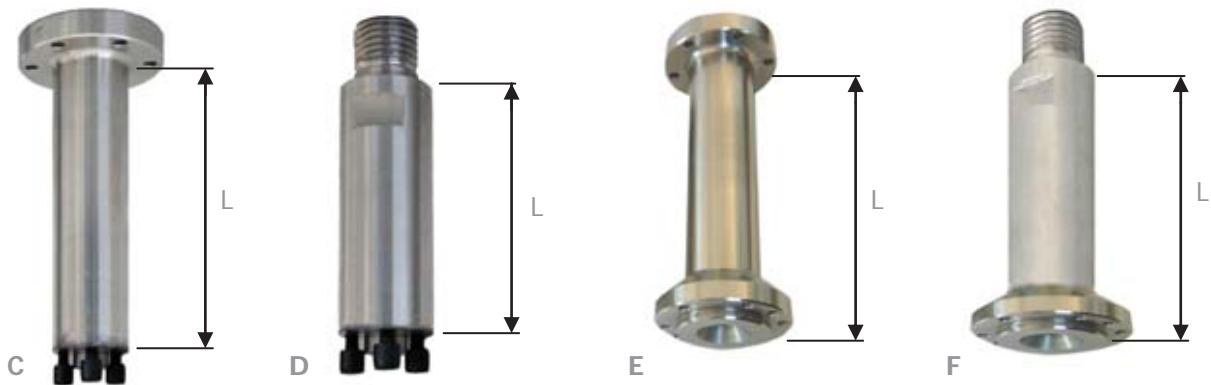
Type	ADI CODE	DIMENSION [DxL]	Fitting	RPM	FEED [mm/min]	Stock Removal [mm]
E	PB29728	45x20	1/2" Gas	6.500-7.500	600-1.200	1-5 Max
F	PB29400	50x20 (3+3)	14mm	6.000-7.000	600-1.200	1-5 Max
G	PB29579	50x20 (2+2)	10mm	6.000-7.000	600-1.200	1-5 Max
H	PB29618	50x20 2 Holes	10mm	6.000-7.000	600-1.200	1-5 Max
I	SL02358	34 (3 Holes)	1/2" Gas	-	-	-
L	SL02613	34 (2 Holes)	1/2" Gas	-	-	-

[BACK TO INDEX](#)

Sintered Tools for Drain Board



Type	ADI CODE	DIMENSION [DxL]	Fitting	RPM	FEED [mm/min]	Stock Removal [mm]
A	PB29525	54x25x7	14 (3+3)	5.000	500	1-5 Max
B	PB29448	91x30x7	50 (3+3)	4.500	800	1-5 Max
C	PB29537	150x25x7	50 (3+3)	4.000	500	1-5 Max



Type	ADI CODE	DIMENSION [D]	Fitting	L [mm]
C	SL01407	77	Flange - 14 (3 Holes)	100
C	SL01408	77	Flange - 14 (3 Holes)	200
D	SL02487	34	M30 - 14 (3 Holes)	100
D	SL02489	34	M30 - 14 (3 Holes)	200
E	SL01157	74	Flange - Flange	100
E	SL01159	74	Flange - Flange	200
F	SL01409	74	M30 - Flange	100
F	SL01410	74	M30 - Flange	200

Tools for Drain Board

[BACK TO INDEX](#)

Drain Board Wheels for 45° on Marble



Code	Description	RPM	FEED [mm/min]	Stock Removal [mm]
PB59015	6A2 BS D.107x12x5 -45° F=50 Pos.1	4.500-5.000	300-600	0,15
PB59016	6A2 BS D.107x12x5 -45° F=50 Pos.2	4.500-5.000	300-600	0,1
PB59017	6A2 EL D.107x12x5 -45° F=50 Pos.3	4.500-5.000	300-600	0,05
PB29666	Polishing D. 95 -45° SNAIL Gr.600	1.000-1.200	800-1.200	0,05
PB29681	Polishing D. 95 -45° SNAIL Gr.1000 MARBLE	1.000-1.200	800-1.200	0,05

Drain Board Wheels for 60° on Marble



Code	Description	RPM	FEED [mm/min]	Stock Removal [mm]
PB59036	6A2 BS D.107x12x5 -60° F=50 Pos.1	4.500-5.000	300-600	0,15
PB59037	6A2 BS D.107x12x5 -60° F=50 Pos.2	4.500-5.000	300-600	0,1
PB59038	6A2 EL D.107x12x5 -60° F=50 Pos.3	4.500-5.000	300-600	0,05
PB29664	Polishing D. 95 -60° SNAIL Gr.600	1.000-1.200	800-1.200	0,05
PB29680	Polishing D. 95 -60° SNAIL Gr.1000 MARBLE	1.000-1.200	800-1.200	0,05

Adaptors



ADI Code	Description	Fitting
PB29015	Adaptor D.72 + 3 Holes (A)	1/2" Gas
SL01050	Adaptor D.72 + 3 Holes (B)	1/2" Gas
SL02128	Snail Lock Adaptor (C)	1/2" Gas

Cnc Profiles Set for Marble Bore 35mm - Internal Diameter 55mm

[BACK TO INDEX](#)



	Pos.1 UHS	Pos.2 UHS	Pos.3	Pos.4	Pos.5
<i>Profile</i>	<i>Vacuum Brazed (Article)</i>	<i>Vacuum Brazed (Article)</i>	<i>Electroplated (Article)</i>	<i>Abrasive (Article)</i>	<i>Abrasive (Article)</i>
A20	(PB40501)	(PB40502)	(PB13501)	(PB13601)	(PB13901)
A30	(PB40503)	(PB40504)	(PB13502)	(PB13602)	(PB13902)
A30-1	(PB40505)	(PB40506)	(PB13503)	(PB13603)	(PB13903)
A40	(PB40507)	(PB40508)	(PB13504)	(PB13604)	(PB13904)
AR20	(PB40509)	(PB40510)	(PB13505)	(PB13605)	(PB13905)
AR30	(PB40511)	(PB40512)	(PB13506)	(PB13606)	(PB13906)
AR40	(PB40513)	(PB40514)	(PB13507)	(PB13607)	(PB13907)
B20	(PB40515)	(PB40516)	(PB13508)	(PB13608)	(PB13908)
B30	(PB40517)	(PB40518)	(PB13509)	(PB13609)	(PB13909)
B30-1	(PB40519)	(PB40520)	(PB13510)	(PB13610)	(PB13910)
B40	(PB40521)	(PB40522)	(PB13511)	(PB13611)	(PB13911)
B+B20	(PB40523)	(PB40524)	(PB13512)	(PB13612)	(PB13912)
B+B30	(PB40525)	(PB40526)	(PB13513)	(PB13613)	(PB13913)
B+B30-1	(PB40527)	(PB40528)	(PB13514)	(PB13614)	(PB13914)
B+B40	(PB40529)	(PB40530)	(PB13515)	(PB13615)	(PB13915)
D20-45°	(PB40531)	(PB40532)	(PB13516)	(PB13616)	(PB13916)
D30-45°	(PB40533)	(PB40534)	(PB13517)	(PB13617)	(PB13917)
D40-45°	(PB40165)	(PB40166)	(PB13576)	(PB13676)	(PB13976)
E20-45°	(PB40535)	(PB40536)	(PB13518)	(PB13618)	(PB13619)
E30-45°	(PB40537)	(PB40538)	(PB13519)	(PB13619)	(PB13916)
E40-45°	(PB40539)	(PB40531)	(PB13520)	(PB13620)	(PB13920)
F20	(PB40541)	(PB40542)	(PB13521)	(PB13621)	(PB13921)
F30	(PB40543)	(PB40544)	(PB13522)	(PB13622)	(PB13922)
F30-9	(PB40545)	(PB40546)	(PB13523)	(PB13623)	(PB13923)
F40	(PB40547)	(PB40548)	(PB13524)	(PB13624)	(PB13924)
F/S20	(PB40549)	(PB40550)	(PB13525)	(PB13625)	(PB13925)
F/S30	(PB40551)	(PB40552)	(PB13526)	(PB13626)	(PB13926)
F/S-1 30	(PB40553)	(PB40554)	(PB13527)	(PB13627)	(PB13927)
F+V30	(PB40555)	(PB40556)	(PB13528)	(PB13628)	(PB13928)
F+V40	(PB40557)	(PB40558)	(PB13529)	(PB13629)	(PB13929)
F+Z30	(PB40559)	(PB40560)	(PB13530)	(PB13630)	(PB13930)
F+Z30-9	(PB40561)	(PB40562)	(PB13531)	(PB13631)	(PB13931)
F+Z40	(PB40563)	(PB40564)	(PB13532)	(PB13632)	(PB13932)
H20	(PB40565)	(PB40566)	(PB13533)	(PB13633)	(PB13933)
H30	(PB40567)	(PB40568)	(PB13534)	(PB13634)	(PB13934)
H30-9	(PB40569)	(PB40570)	(PB13535)	(PB13635)	(PB13935)
HS30	(PB40571)	(PB40572)	(PB13536)	(PB13636)	(PB13936)
I20	(PB40573)	(PB40574)	(PB13537)	(PB13637)	(PB13937)
I30	(PB40575)	(PB40576)	(PB13538)	(PB13638)	(PB13938)
L20	(PB40577)	(PB40578)	(PB13539)	(PB13639)	(PB13939)
L30	(PB40579)	(PB40580)	(PB13540)	(PB13640)	(PB13940)

Cnc Profiles Set for Marble Bore 35mm - Internal Diameter 55mm

[BACK TO INDEX](#)



	Pos.1 UHS	Pos.2 UHS	Pos.3	Pos.4	Pos.5
<i>Profile</i>	<i>Vacuum Brazed (Article)</i>	<i>Vacuum Brazed (Article)</i>	<i>Electroplated (Article)</i>	<i>Abrasive (Article)</i>	<i>Abrasive (Article)</i>
M30	(PB40681)	(PB40682)	(PB13541)	(PB13641)	(PB13941)
MQ30	(PB40655)	(PB40656)	(PB13542)	(PB13642)	(PB13942)
O30	(PB40585)	(PB40586)	(PB13543)	(PB13643)	(PB13943)
O30-9	(PB40587)	(PB40588)	(PB13544)	(PB13644)	(PB13944)
Q30	(PB40589)	(PB40590)	(PB13545)	(PB13645)	(PB13945)
QB30	(PB40591)	(PB40592)	(PB13546)	(PB13646)	(PB13946)
SM20	(PB40593)	(PB40594)	(PB13547)	(PB13647)	(PB13947)
SM30	(PB40595)	(PB40596)	(PB13548)	(PB13648)	(PB13948)
SM40	(PB40597)	(PB40598)	(PB13549)	(PB13649)	(PB13949)
T20	(PB40599)	(PB40600)	(PB13550)	(PB13650)	(PB13950)
T20-1	(PB40601)	(PB40602)	(PB13551)	(PB13651)	(PB13951)
T30	(PB40603)	(PB40604)	(PB13552)	(PB13652)	(PB13952)
T30-1	(PB40605)	(PB40606)	(PB13553)	(PB13653)	(PB13953)
T30-3	(PB40607)	(PB40608)	(PB13554)	(PB13654)	(PB13954)
T30-4	(PB40609)	(PB40610)	(PB13555)	(PB13655)	(PB13955)
T40	(PB40611)	(PB40612)	(PB13556)	(PB13656)	(PB13956)
T40-1	(PB40613)	(PB40614)	(PB13557)	(PB13657)	(PB13957)
V20	(PB40615)	(PB40616)	(PB13558)	(PB13658)	(PB13958)
V30	(PB40617)	(PB40618)	(PB13559)	(PB13659)	(PB13959)
V40	(PB40619)	(PB40620)	(PB13560)	(PB13660)	(PB13960)
V+B30	(PB40621)	(PB40622)	(PB13561)	(PB13661)	(PB13961)
V+B40	(PB40623)	(PB40624)	(PB13562)	(PB13662)	(PB13962)
VX30	(PB40625)	(PB40626)	(PB13563)	(PB13663)	(PB13963)
1A1(Z) 20	(PB40627)	(PB40628)	(PB13564)	(PB13664)	(PB13964)
1A1(Z) 30	(PB40629)	(PB40630)	(PB13565)	(PB13665)	(PB13965)
1A1(Z) 40	(PB40631)	(PB40632)	(PB13566)	(PB13666)	(PB13966)
ZR20	(PB40633)	(PB40634)	(PB13567)	(PB13667)	(PB13967)
ZR30	(PB40635)	(PB40636)	(PB13568)	(PB13668)	(PB13968)
ZR30-2	(PB40637)	(PB40638)	(PB13569)	(PB13669)	(PB13969)
ZR30-3	(PB40639)	(PB40640)	(PB13570)	(PB13670)	(PB13970)
ZR40	(PB40641)	(PB40642)	(PB13571)	(PB13671)	(PB13971)
ZS20	(PB40643)	(PB40644)	(PB13572)	(PB13672)	(PB13972)
ZS30	(PB40645)	(PB40646)	(PB13573)	(PB13673)	(PB13973)
ZS30-1	(PB40647)	(PB40648)	(PB13574)	(PB13674)	(PB13974)
ZS40	(PB40649)	(PB40650)	(PB13575)	(PB13675)	(PB13975)

<i>Parameters</i>	Pos.1	Pos.2	Pos.3	Pos.4	Pos.5
RPM	5.500-6.000	5.500-6.000	5.500-6.000	1.200-1.500	1.200-1.500
Feed [mm/min]	300-600	600-800	600-800	400-800	400-800
Stock Removal [mm]	To Shape	0,15-0,1	0,1-0,05	0,05-0,1	0,05-0,1

Vacuum Brazed Wheels for Solid Sink Execution On Marble

[BACK TO INDEX](#)

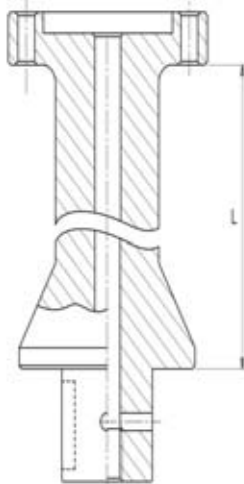


A

Type	ADI CODE	DIMENSION [DxL]	Fitting [mm]	RPM	FEED [mm/min]	Stock Removal [mm]
Coarse (A)	PB60003	85x60 R=25	35	4.000-5.000	800-1.500	Shape
Fine (B)	PB60027	85x60 R=25	35	4.000-5.000	1.000-2.000	0,2-0,5

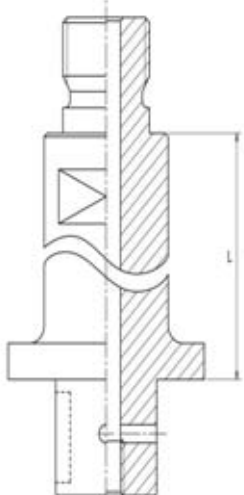


B



Extension A=35 - Flange

Code	Product details
SL01088	A=35 L=70 Flange
SL01095	A=35 L=160 Flange

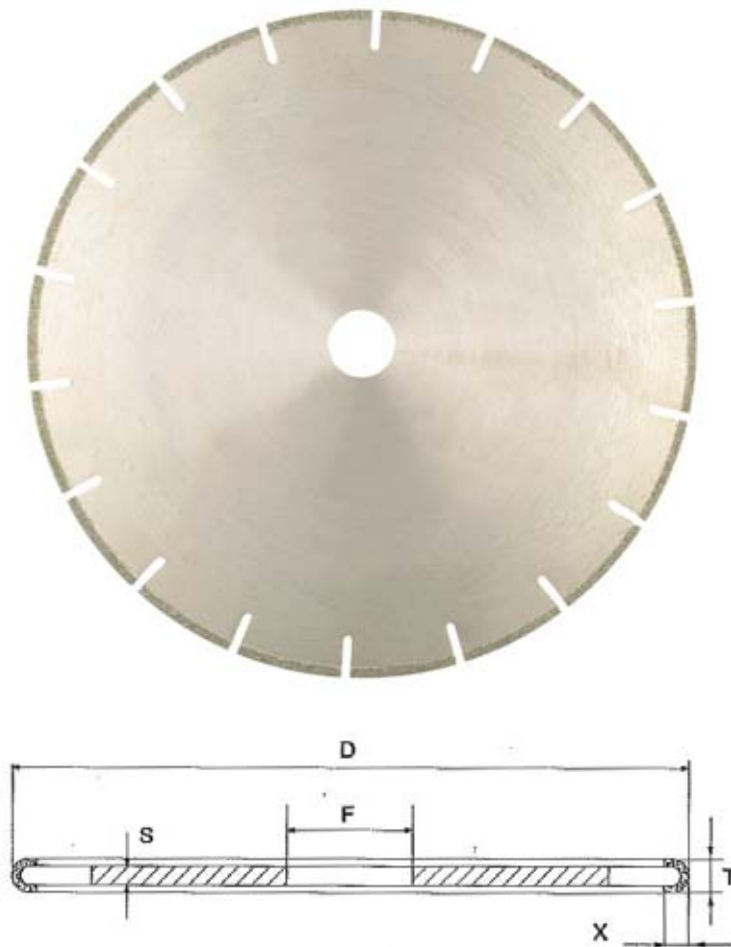


Extension A=35 - M30

Code	Product details
SL01077	A=35 L=70 M30
SL01072	A=35 L=140 M30

Electroplated Diamond Blades

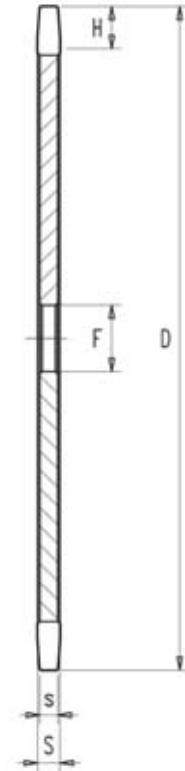
[BACK TO INDEX](#)



ADI CODE	DIMENSION [D]	Fitting [mm]	Core Thickness (S) [mm]	Diamond Thickness (T) [mm]	Diamond Height (X) [mm]	RPM	FEED [mm/min]
PF05090	240	30	1,8	3,0	3,0	3.500-4.000	300-600
PF05002	290	30	1,8	3,0	3,0	2.900-3.500	300-600
PF05016	340	30	2,2	3,4	3,5	2.500-3.000	300-600
PF05017	390	50/30	2,5	3,7	3,5	2.200-2.700	300-600
PF05143	440	50/30	2,8	4,0	3,5	1.800-2.300	300-600
PF05018	490	50/30	2,8	4,0	3,5	1.500-1.800	300-600
PF05144	540	50/30	3,5	4,5	3,5	1.300-1.500	300-600
PF05145	590	50/30	3,5	4,5	3,5	1.100-1.300	300-600

Electroplated Saw Blades to Shape

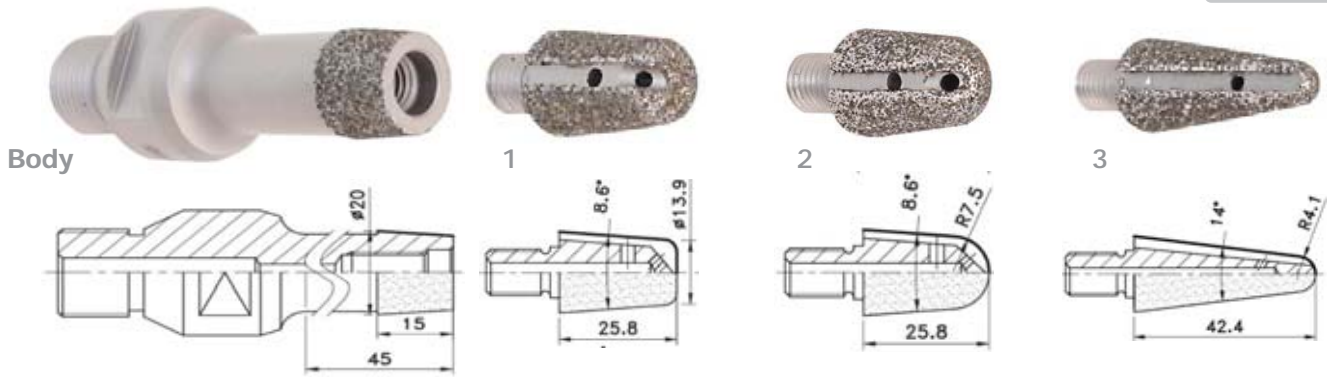
[BACK TO INDEX](#)



ADI CODE	DIMENSION [D]	Fitting [F] [mm]	Core Thickness (S) [mm]	Head Thickness (s) [mm]	Diamond Height (H) [mm]	Diamond Grit	RPM
PF05516	300	50/30	10	8	19	D427	2.900-3.500
PF05508	350	50/30	10	8	19	D427	2.500-3.000
PF05517	400	50/30	11	8	20	D427	2.200-2.700
PF05524	450	50/30	12	9	20	D427	1.800-2.300
PF05525	500	50/30	14	11	20	D427	1.500-1.800
PF05515	300	50/30	10	8	19	D602	2.900-3.500
PF05520	350	50/30	10	8	19	D602	2.500-3.000
PF05507	400	50/30	11	8	20	D602	2.200-2.700
PF05509	450	50/30	12	9	20	D602	1.800-2.300
PF05510	500	50/30	14	11	20	D602	1.500-1.800

Electroplated Tools for Engraving Marble

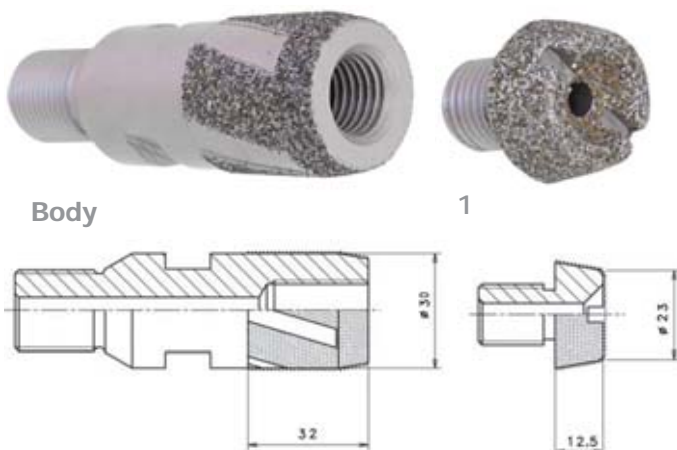
[BACK TO INDEX](#)



ADI Code	Description	Fitting	RPM	FEED [mm/min]	Stock Removal [mm]
PB23152	Body 20x15 M10 Female	A1/2"Gas	6.000-7.000	150-300	3-4
PB23153	(1) 1V1W EL 17x25	M10	6.000-7.000	150-300	3-4
PB23162	(2) 1T1W EL 17x25 R=7,5	M10	6.000-7.000	150-300	3-4
PB23337	(3) 1E1W EL 17x42 R=4,1	M10	6.000-7.000	150-300	3-4



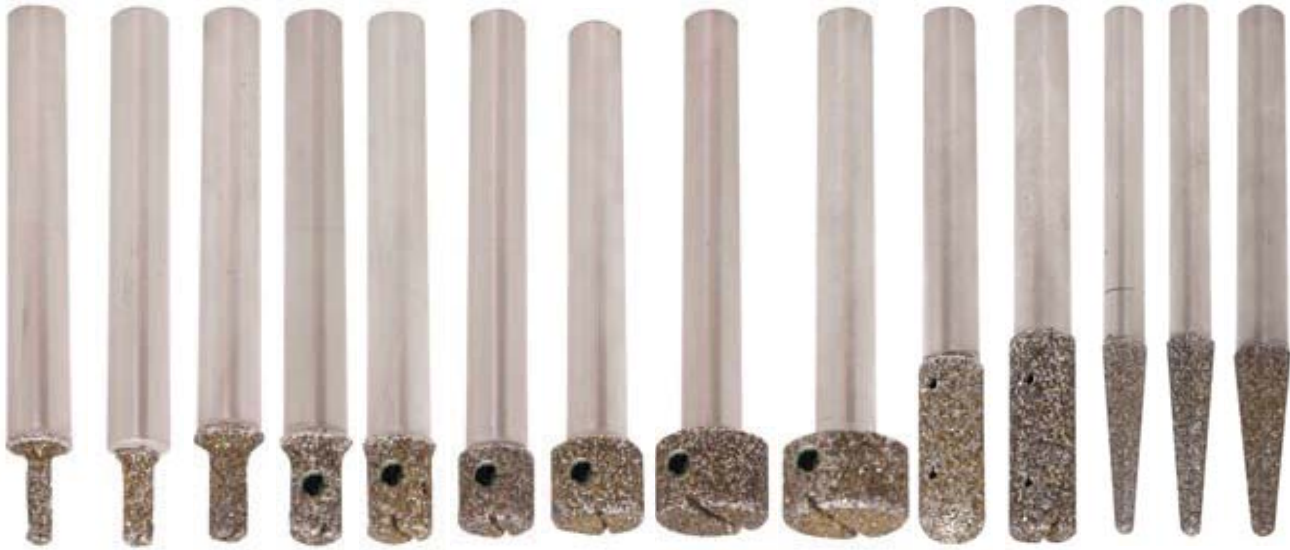
ADI Code	Description	Fitting	RPM	FEED [mm/min]	Stock Removal [mm]
SL02103	Adaptor Bore 6mm	A1/2"Gas	-	-	-
PB23105	(1) 1K1W EL 4x36	Shaft 6mm	7.000-8.000	150-300	3



ADI Code	Description	Fitting	RPM	FEED [mm/min]	Stock Removal [mm]
PB23159	Body 30x32 M10	A1/2"Gas	6.000-7.000	150-300	3-4
PB23158	(1) 1V1W EL 23x12,5	M16	6.000-7.000	150-300	3-4

Electroplated Tools for Engraving Marble

[BACK TO INDEX](#)



ADI Code	Description	Fitting	RPM	FEED [mm/min]	Stock Removal [mm]
PB23214	1U1W EL D. 4x12	Shaft 10	8.000-10.000	150-300	1-2 Max
PB23215	1U1W EL D. 5x12	Shaft 10	8.000-10.000	150-300	1-2 Max
PB23216	1U1W EL D. 6x12	Shaft 10	8.000-10.000	150-300	1-2 Max
PB23217	1U1W EL D. 8x12(*)	Shaft 10	8.000-10.000	150-300	1-2 Max
PB23218	1U1W EL D.10x12(*)	Shaft 10	7.000-8.000	150-300	1-2 Max
PB23219	1U1W EL D.12x12(*)	Shaft 10	7.000-8.000	150-300	1-2 Max
PB23220	1U1W EL D.15x12(*)	Shaft 10	7.000-8.000	150-300	1-2 Max
PB23221	1U1W EL D.18x12(*)	Shaft 10	6.000-7.000	150-300	1-2 Max
PB23222	1U1W EL D.20x12(*)	Shaft 10	6.000-7.000	150-300	1-2 Max
PB23338	1U1W EL D.11x30(*) L=100	Shaft 10	7.000-8.000	150-300	1-2 Max
PB23339	1U1W EL D.11x35(*) L=100	Shaft 10	7.000-8.000	150-300	1-2 Max
PB23340	1K1W EL D.4/9x35 L=110	Shaft 8	8.000-10.000	150-300	1-2 Max
PB23341	1K1W EL D.5/10x35 L=110	Shaft 10	8.000-10.000	150-300	1-2 Max
PB23342	1K1W EL D.5/10x35 for Granite L=110	Shaft 10	8.000-10.000	150-300	1-2 Max

(*) With internal water



Electroplated Tools for Writing on Marble

ADI Code	Description	Fitting	RPM	FEED [mm/min]	Stock Removal [mm]
PB23343	1K1W EL D.10 - 90°	Shaft 10	7.000-8.000	150-300	1-2 Max
PB23344	1K1W EL D.12 - 90° (*)	Shaft 10	7.000-8.000	150-300	1-2 Max

(*) With internal water

Electroplated Tools for Engraving Marble

[BACK TO INDEX](#)



Body



1

2

ADI Code	Description	RPM	FEED [mm/min]	Fitting
PB25223	Body 1A1W EL 20x20 LU=100	-	-	1/2" Gas
PB25153	(1) 1U1W EL 20x20	6.000-7.000	200-300	M12
PB25163	(2) 1F1W EL 20x20	6.000-7.000	200-300	M12



Body



1

2

ADI Code	Description	RPM	FEED [mm/min]	Fitting
PB25285	Body 1A1W EL 25x20 LU=100	-	-	1/2" Gas
PB25286	(1) 1U1W EL 25x20	5.000-6.000	200-300	M14
PB25287	(2) 1F1W EL 25x20	5.000-6.000	200-300	M14



Body



1

2

ADI Code	Description	RPM	FEED [mm/min]	Fitting
PB25291	Steel Body 30x20 LU=100	-	-	1/2" Gas
PB25289	(1) 1U1W EL 30x20	5.000-5.500	200-300	M14
PB25290	(2) 1F1W EL 30x20	5.000-5.500	200-300	M14

Electroplated Tools for Engraving Marble

[BACK TO INDEX](#)

- PB23286 4x60 
- PB23287 5x60 
- PB23042 6x60 
- PB23043 8x60 
- PB23044 10x60 
- PB23045 12x60 
- PB23018 16x60 
- PB23293 3x15x60 
- PB23036 4x15x60 
- PB23112 5x15x60 
- PB23016 6x12x60 

- PB23294 3x12x60 
- PB23289 4x12x60 
- PB23290 5x12x60 
- PB23037 6x12x60 
- PB23059 8x12x60 
- PB23113 10x12x60 
- PB23114 12x12x60 
- PB23019 16,7x25x60 
- PB23032 8x20x60 
- PB23017 10x25x60 
- PB23012 12x30x65 

Electroplated Tools for Engraving Marble

[BACK TO INDEX](#)

ADI Code	Description	Fitting [mm]	RPM	FEED [mm/min]	Stock Removal [mm]
PB23286	1R1W EL 4x60	Shaft 6	8.000-10.000	150-300	1-2 max
PB23287	1R1W EL 5x60	Shaft 6	8.000-10.000	150-300	1-2 max
PB23042	1R1W EL 6x60	Shaft 6	8.000-10.000	150-300	1-2 max
PB23043	1R1W EL 8x60	Shaft 6	8.000-10.000	150-300	3 max
PB23044	1R1W EL 10x60	Shaft 6	7.000-8.000	150-300	3 max
PB23045	1R1W EL 12x60	Shaft 6	7.000-8.000	150-300	3 max
PB23018	1R1W EL 16x60	Shaft 6	6.000-7.000	150-300	3 max
PB23293	1F1W EL 3x15x60 R=1,5	Shaft 6	8.000-10.000	150-300	1-2 max
PB23036	1F1W EL 4x15x60 R=2,0	Shaft 6	8.000-10.000	150-300	1-2 max
PB23112	1F1W EL 5x15x60 R=2,5	Shaft 6	8.000-10.000	150-300	1-2 max
PB23016	1F1W EL 6x12x60	Shaft 6	8.000-10.000	150-300	1-2 max
PB23294	1U1W EL 3x12x60	Shaft 6	8.000-10.000	150-300	1 max
PB23289	1U1W EL 4x12x60	Shaft 6	8.000-10.000	150-300	1-2 max
PB23290	1U1W EL 5x12x60	Shaft 6	8.000-10.000	150-300	1-2 max
PB23037	1U1W EL 6x12x60	Shaft 6	8.000-10.000	150-300	1-2 max
PB23059	1U1W EL 8x12x60	Shaft 6	8.000-10.000	150-300	1-2 max
PB23113	1U1W EL 10x12x60	Shaft 6	7.000-8.000	150-300	3 max
PB23114	1U1W EL 12x12x60	Shaft 6	7.000-8.000	150-300	3 max
PB23019	1A1PW EL 16,7x25x60	Shaft 6	6.000-7.000	150-300	3 max
PB23032	1U1W EL 8x20x60	Shaft 6	8.000-10.000	150-300	1-2 max
PB23017	1U1W EL 10x25x60	Shaft 6	7.000-8.000	150-300	3 max
PB23012	1U1W EL 12x30x65	Shaft 6	7.000-8.000	150-300	3 max

Electroplated Tools for Engraving Marble

[BACK TO INDEX](#)

PB23115 4,5x30x65



PB23103 6,5x30x65



PB23104 9x36x65



PB23038 5x15x60



PB23015 6x12x60



PB23118 9x36x65



PB23025 6x14x60



PB23026 8x17x60



PB23039 10x20x60



PB23100 12x22x60



PB23033 6x5,2x60



PB23040 8x7x60



PB23116 10x8,5x60



PB23117 12x10,5x60



PB23070 16x14x60



PB23034 10x 5x60



PB23041 16x 8x60



PB23119 20x10x60



Electroplated Tools for Engraving Marble

[BACK TO INDEX](#)

ADI Code	Description	Fitting [mm]	RPM	FEED [mm/min]	Stock Removal [mm]
PB23115	1F1W EL 4,5x30x65 R=2,75	Shaft 6	8.000-10.000	150-300	1 mm
PB23103	1F1W EL 6,5x15x65 R=3,75	Shaft 6	8.000-10.000	150-300	1-2 max
PB23104	1F1W EL 9x36x65 R=4,5	Shaft 6	8.000-10.000	150-300	3 max
PB23038	1K1W EL 5x15x60	Shaft 6	8.000-10.000	150-300	1-2 max
PB23015	1K1W EL 6x12x60	Shaft 6	8.000-10.000	150-300	1-2 max
PB23118	1K1W EL 9x36x65	Shaft 6	8.000-10.000	150-300	1-2 max
PB23025	1A1W DIS EL 6x14x60	Shaft 6	8.000-10.000	150-300	1-2 max
PB23026	1A1W DIS EL 8x17x60	Shaft 6	8.000-10.000	150-300	1-2 max
PB23039	1A1W DIS EL 10x20x60	Shaft 6	8.000-10.000	150-300	1-2 max
PB23100	1A1W DIS EL 12x22x60	Shaft 6	7.000-8.000	150-300	3 max
PB23033	1K1W EL 6x5,2x60 -60°	Shaft 6	7.000-8.000	150-300	3 max
PB23040	1K1W EL 8x7x60 -60°	Shaft 6	8.000-10.000	150-300	1-2 max
PB23116	1K1W EL 10x8,5x60 -60°	Shaft 6	7.000-8.000	150-300	3 max
PB23117	1K1W EL 12x10,5x60 -60°	Shaft 6	7.000-8.000	150-300	3 max
PB23070	1K1W EL 16x14x60 -60°	Shaft 6	7.000-8.000	150-300	3 max
PB23034	1K1W EL 10x5x60 -90°	Shaft 6	7.000-8.000	150-300	3 max
PB23041	1K1W EL 16x8x60 -90°	Shaft 6	7.000-8.000	150-300	3 max
PB23119	1K1W EL 20x10x60 -90°	Shaft 6	6.000-7.000	150-300	3 max

Electroplated Tools for Engraving Granite

[BACK TO INDEX](#)

PB23079 3x6



PB23081 4x7



PB23064 5x8



PB23083 6x12



PB23085 3x 7



PB23087 6x60



PB23089 10x60



PB23091 6x12x60



PB23093 8x20x60



PB23095 5x15x60



PB23291 9x36x65



PB23080 3x12



PB23082 3x12



PB23065 4x7



PB23084 5x12



PB23086 6x11



PB23088 6x30x65



PB23090 5x15x60



PB23092 10x8,5x60



PB23094 10x5x60



PB23096 8x17x60

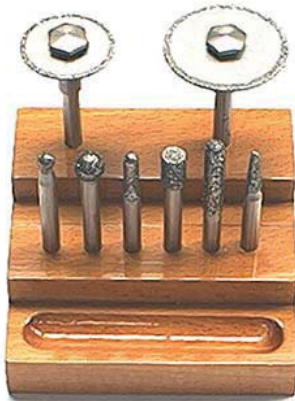


PB23292 16x8x60



Electroplated Tools for Engraving Granite

[BACK TO INDEX](#)



ADI Code	Description	Composition
PB23271	KIT 1	PB23042 - PB23112-PB23103- PB23044-PB23059-PB23038- PF05050(+M2)-PF05075(+M2)



ADI Code	Description	Composition
PB23190	KIT 2	PB23042 - PB23043 - PB23038 - PB23116 - PB23044 - PB23019 - PB23104-PB23112 - PB23103 - PB23026



ADI Code	Description	Composition
PB23284	KIT 3	PB23042 - PB23036 - PB23103 - PB23025-PB23043-PB23037- PB23104-PB23039-PB23044- PB23113-PB23038-PB23116- PB23045-PB23019-PB23118



ADI Code	Description	Composition
PB23285	KIT 4	PB23042 - PB23059 - PB23104 - PB23040 - PB23043 - PB23113 - PB23038 - PB23116-PB23044 - PB23114 - PB23015 - PB23117 - PB23045 - PB23019 - PB23118 - PB23070-PB23018 - PB23032 - PB23025 - PB23034 - PB23036 - PB23017 - PB23026 - PB23041 PB23112 - PB23012 - PB23039 - PB23119 - PB23015 - PB23115 - PB23100 - PB23037-PB23103 - PB23033

Electroplated Tools for Engraving Granite

[BACK TO INDEX](#)

ADI Code	Description	Fitting [mm]	RPM	FEED [mm/min]	Stock Removal [mm]
PB23079	1R1W EL 3x6 R=1,5	Shaft 3	8.000-10.000	150-300	3 max
PB23081	1R1W EL 4x7 R=2,0	Shaft 3	8.000-10.000	150-300	3 max
PB23064	11V2W EL 5x8	Shaft 3	8.000-10.000	150-300	3 max
PB23083	1U1W EL 6x12	Shaft 3	8.000-10.000	150-300	3 max
PB23085	1F1W EL 3x7 R=1,5	Shaft 3	8.000-10.000	150-300	3 max
PB23080	1T1W EL 3x12	Shaft 3	8.000-10.000	150-300	3 max
PB23082	1K1W EL 3x12	Shaft 3	8.000-10.000	150-300	3 max
PB23065	1K1W EL 4x 7	Shaft 3	8.000-10.000	150-300	3 max
PB23084	1K1W EL 5x12	Shaft 3	8.000-10.000	150-300	3 max
PB23086	1T1W EL 6x11	Shaft 3	8.000-10.000	150-300	3 max
PB23087	1R1W EL 6x60 R=3,0	Shaft 6	8.000-10.000	150-300	3 max
PB23089	1R1W EL 10x60 R=5,0	Shaft 6	8.000-10.000	150-300	3 max
PB23091	1U1W EL 6x12x60	Shaft 6	8.000-10.000	150-300	3 max
PB23093	1U1W EL 8x20x60	Shaft 6	8.000-10.000	150-300	3 max
PB23095	1F1W EL 5x15x60 R=2,5	Shaft 6	8.000-10.000	150-300	3 max
PB23291	1K1W EL 9x36x65 R=2,5	Shaft 6	8.000-10.000	150-300	3 max
PB23088	1F1W EL 6x30x65 R=3,0	Shaft 6	8.000-10.000	150-300	3 max
PB23090	1K1W EL 5x15x60	Shaft 6	8.000-10.000	150-300	3 max
PB23092	1K1W EL 10x10,5x60	Shaft 6	8.000-10.000	150-300	3 max
PB23094	1K1W EL 10x5x60	Shaft 6	8.000-10.000	150-300	3 max
PB23096	1A1W DIS EL 8x17x60	Shaft 6	8.000-10.000	150-300	3 max
PB23292	1K1W EL 16x 8x60 -90°	Shaft 6	8.000-10.000	150-300	3 max



Premium Adapter A=1/2GAS

[BACK TO INDEX](#)

ADI Code	Description
SL02231	ER 16 Adapter A=1/2"Gas
SL02656	ER 25 Adapter A=1/2"Gas
SL02500	ER 32 Adapter A=1/2"Gas

Complete of Key and Collets D.6 and D.10

Nut Replacement

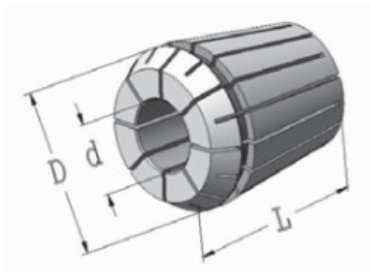
ADI Code	Description
SL02333	Nut for ER 16
SL02657	Nut for ER 25
SL02563	Nut for ER 32

Special Key Replacement

ADI Code	Description
SL02352	Key for ER 16
SL02658	Key for ER 25
SL02607	Key for ER 32

Collet Table

ADI Code	Type	L	D [mm]	d [mm]
PB29695	ER 16	27.5	16	2.50
PB29519	ER 16	27.5	16	3.00
PB29170	ER 16	27.5	16	6.00
PB29696	ER 16	27.5	16	8.00
PB29172	ER 16	27.5	16	10.00
PB29697	ER 20	31.5	20	2.50
PB29698	ER 20	31.5	20	3.00
PB29686	ER 20	31.5	20	6.00
PB29685	ER 20	31.5	20	8.00
PB29679	ER 20	31.5	20	10.00
PB29699	ER 25	34	25	2.50
PB29700	ER 25	34	25	3.00
PB29701	ER 25	34	25	6.00
PB29702	ER 25	34	25	8.00
PB29703	ER 25	34	25	10.00
PB29704	ER 32	40	32	2.50
PB29663	ER 32	40	32	3.00
PB29668	ER 32	40	32	6.00
PB29705	ER 32	40	32	8.00
PB29596	ER 32	40	32	10.00



For finger bit with Diameter 2.35 shaft we suggest to use collet of diameter 2.5mm

BACK TO INDEX

CLASSIFICATION ACCORDING VARIOUS STANDARDS—THICKNESS & PLATING TOLLERANCES

USA MESH ISO 6106-79 2° SYSTEM	FEPA NARROW ISO 6106-79 1° SYSTEM	ISO S65 MICRON	DIN 848 FINE	DIN 848 COARSE	CONVENZIONALE CONVENTIONAL	SPESSORE SUL DIAMETRO	SPESSORE SUL RAGGIO	TOLLERANZA SUL RAGGIO
8-10								
10-12								
12-14								
14-16								
16-18	D1181	1180-1000		D1100				
16-20	*D1182	1180-850			24			
18-20	D1001	1000-850		D900		2,8	1,4	
20-25	D851	850-710		D700		2,2	1,1	
20-30	*D852	850-600		D700	36	2,2	1,1	
25-30	D711	710-600		D700		1,9	0,95	
30-35	D601	600-500	D550	D500		1,6	0,80	
30-40	*D602	600-425		D500	46	1,6	0,80	±0,25
35-40	D501	500-425	D450	D500		1,3	0,65	±0,20
40-45	D426	425-355		D350				
40-50	*D427	425-300		D350	60	1,00	0,50	±0,15
45-50	D356	355-300		D350				
50-60	D301	300-250	D280	D250		0,80	0,40	±0,1
60-70	D251	250-212	D220	D250				
60-80	D252	250-180			80			
70-80	D213	212-180	D180	D150		0,60	0,30	±0,06
80-100	D181	180-150	D180	D150	100			
100-120	D151	150-125	D140	D150		0,36	0,18	±0,04
120-140	D126	125-106	D110	D100	120	0,30	0,15	±0,03
140-170	D107	106-90	D90	D100	140	0,26	0,13	±0,03
170-200	D91	90-75	D90	D70	160			
200-230	D76	75-63	D65	D70	200	0,20	0,10	±0,02
230-270	D64	63-53	D55	D50	230			
270-325	D54	53-45	D45	D50	270			
325-400	D46	45-38	D45	D50	400	0,14	0,07	±0,02
	My 60	60-40						
	45	54-36						
	30	36-22						
	15	22-12						
	9	12-6						
	6	8-4						
	3	4-2						
	2	3-1						
	1	2-0,5						
	0,5	0,75-0,25						
	0,25	0,25-0						



ADI S.p.A.
Via dell'Economia, 12/16 - 36016 Thiene (VI) Italy
Tel: +39.0445.360244 Fax: +39.0445.366862
info@aditools.com - www.aditools.com

ADI USA Inc.
1477 Connelly Springs Rd 28645 Lenoir / North Carolina - USA
Tel. 1-828-7284711 - Fax 1-828-7289613
info@aditools-usa.com - www.aditools-usa.com